

Guide to train services

Coast, Lakes, Dales and Fells

Valid from Sunday 16 May 2021
until Saturday 11 December 2021

Showing train services between:

- Carlisle, Workington and Whitehaven to Barrow-in-Furness
- Barrow-in-Furness and Grange-over-Sands to Lancaster, Preston and Manchester
- Carlisle/Windermere, Kendal and Oxenholme to Lancaster, Preston and Manchester
- Leeds and Skipton to Settle, Appleby and Carlisle
- Leeds and Skipton to Bentham, Lancaster, Morecambe and Heysham Port
- Carlisle to Hexham, Metro Centre and Newcastle.



NORTHERN

AVANTI
WEST COAST



TRANSPENNINE
EXPRESS

Celebrating

175 YEARS OF

THE FURNESS RAILWAY AND THE LAKES LINE

1846 – 2021

175 years ago, in 1846, the Furness Railway and the Lakes Line were opened, transforming the way both goods and passengers were transported in south Cumbria.

Visit communityrailcumbria.co.uk/projects or [facebook.com/Cumbria175](https://www.facebook.com/Cumbria175) to learn more and to join a series of events taking place throughout 2021 and 2022!



Furness Railway's No. 20
© Furness Railway Trust.



Steam at Windermere
© Cumbrian Railways Association.



Northern class 195 leaving Carlisle
© David Stubbins.

This guide provides information on train services across Cumbria and The Lake District.

Map of the railways in the north west	4-5
Useful information	6-7
Ticketing information, including Day Rover & Rangers	8-16

Timetables

The Cumbrian Coast & Furness Lines 17-44

Carlisle - Barrow-in-Furness - Lancaster - Preston - Manchester - Manchester Airport

The Lakes Line and West Coast 45-68

Carlisle/Windermere - Oxenholme - Lancaster - Preston - Manchester - Manchester Airport

Settle & Carlisle 69-78

Leeds - Skipton - Settle - Appleby - Carlisle

The Bentham Line 79-86

Leeds - Skipton - Bentham - Lancaster - Morecambe - Heysham Port

The Tyne Valley Line 87-96

Carlisle - Hexham - Newcastle



Information is correct at the time of issue - May 2021. Whilst every care has been taken to produce this information Northern Trains Limited can not be held liable for any errors or omissions once printed.

Reprinted July 2021



How to read this timetable

Look down the left hand column for your departure station. Read across until you find a suitable departure time. Read down the column to find the arrival time at your station. Through services are shown in **bold type** (this means you won't have to change trains). Connecting services are shown in light type. If you travel on a connecting service, change at the next station shown in bold. If you arrive on a connecting service, change at the last station shown in bold, unless a footnote advises otherwise.



Minimum connection times

All stations have a minimum connection time of **5 minutes** unless stated otherwise. **Carlisle 8 minutes, Lancaster 6 minutes, Manchester Piccadilly and Leeds 10 minutes.**



Community Rail Partnership and community groups

We support a number of active Community Rail Partnerships (CRPs) across our network. CRPs bring together local communities and the rail industry to deliver benefits to both, and to encourage the use of the lines they represent.

Cumbrian Coast Community Rail Partnership
Furness Line Community Rail Partnership
Lakes Line Community Rail Partnership
communityrailcumbria.co.uk

Settle to Carlisle Railway
settle-carlisle.co.uk

The Bentham Line
communityraillancashire.co.uk/bentham-line

The Tyne Valley Community Rail Partnership
tvcrp.org.uk

Some stations on this route are adopted by local community groups. For more information, please visit northernrailway.co.uk/community.



Planning your journey

National Rail Enquiries

For full details of all train times, fares and rail travel information anywhere on the national rail network, call **03457 48 49 50**, or visit nationalrail.co.uk

TrainTracker™

For up to date travel information and live departures direct to your mobile, text your **station name** or **location code** to **8 49 50**.

Times shown in this guide are correct at the time of issue, however, Avanti West Coast and TransPennine Express services may be subject to change. Please check before travelling.

Customers with disabilities or limited mobility are encouraged to contact our **Customer Experience Centre** for assistance.

Call: **0800 138 5560**

Textphone: **0800 138 5560**

Email: assistance@northernrailway.co.uk



Improving our railway

Engineering work to help improve the railway sometimes affects train journeys, particularly at weekends and around Bank Holidays.

Visit northernrailway.co.uk/improvements or call **National Rail Enquiries** on **03457 48 49 50** or visit nationalrail.co.uk to check before you travel.



Delay Repay

You may be able to claim Delay Repay if one of our trains is late or cancelled.

Visit northernrailway.co.uk/delayrepay for more information.



Penalty Fares

Like most rail companies, we operate a penalty fares system on our services. Anyone without a valid ticket will be liable to pay the penalty fare.

Visit northernrailway.co.uk/penaltyfares for more information.



Tickets

Single and return tickets

Single and return tickets can be purchased at staffed stations, from ticket vending machines, from conductors on trains and through ticketing apps.

Tickets can be bought by cash and contactless at staffed stations and on train. Our ticket vending machines are contactless/card only.

Children between 5 and 16 travel at half the adult fare.

Rovers and Rangers

If you want to explore the cities, coast and countryside in one day, then choose from our four Day Ranger or Round Robin tickets, which include Cumbria and The Lake District. Hop on and off all day on your chosen route or within a defined area - the choice is yours.

Time restrictions

You can use the Cumbria Day Ranger, Cumbrian Coast Day Ranger, Lakes Day Ranger or the Cumbria Round Robin at any time.

The North West Round Robin can only be used on trains timed to depart from your starting station after 0900 Monday to Friday. Explorer 55 tickets can only be used on trains timed to depart from your starting station after 0930 Monday to Friday. Both can be used at any time during weekends and Bank Holidays.

Where to purchase

Day Ranger or Round Robin tickets can be purchased at your local staffed station or when boarding at an unstaffed station, or if the ticket office is closed, you from the conductor on the train.

Explorer 55 tickets require proof of age at point of sale is required and must be available at time of travelling.

Prices

The prices shown are correct as of 1 March 2021, however, are subject to change.

Please check our website or ask a member of staff at a ticket office to confirm the latest prices.

Railcard and Child discounts

Railcard discounts are available on most of our Day Ranger and Round Robin tickets (where conditions of the railcard are met).

Children 5 - 15 years old inclusive travel at half the Adult fare except on family tickets, where no further discount applies.

A Lakes Day Ranger family ticket is available for two adults and up to two children travelling together, two adults can travel together without a child. No railcard discounts are available.

Added value

Lakes Day Rangers also includes travel on Stagecoach bus services in Cumbria (except school buses), including travel to/from Lancaster on service 555.

Rail Charter Services 'Staycation Express'

National Rail Rover, Ranger and Round Robin tickets are **not valid for travel** on these services.

Special connecting through fares are available between certain Northern services and the 'Staycation Express' services.



Tickets - Rovers and Rangers

Cumbria Day Ranger

Explore three scenic railway lines including the world-famous Settle - Carlisle line. Enjoy breathtaking views of the Cumbrian Coast, Yorkshire Dales and Morecambe Bay on your journey of discovery.

Take time out to explore Dumfries, the border city of Carlisle, historic Lancaster or one of Britain's newest cities - Preston. From the Scottish borders to the Yorkshire Dales, you'll be amazed at how far you can travel with your Cumbria Day Ranger.



£48.40 adult

railcard discount prices

£31.95 16-25, 26-30, Senior, Two Together, HM Forces and Disabled Person's Railcard

£24.20 16-17 SAVER

£24.20 child

£31.95 Adult **£9.20** Child Friends and Family Veterans



Tickets - Rovers and Rangers

Cumbrian Coast Day Ranger

Connecting the border city of Carlisle in the north with the ship-building town of Barrow-in-Furness in the south, the Cumbrian Coast line is an 85-mile journey with many contrasts.

Explore the Georgian town of Whitehaven, visit the Lake District National Park's only coastal village of Ravenglass for Eskdale, discover the history of Barrow at the town's Dock Museum, or just enjoy the spectacular scenery with the sea on one side and fells on the other.



£22.00 adult

railcard discount prices

£14.50 16-25, 26-30, Senior, Two Together, HM Forces and Disabled Person's Railcard

£11.00 16-17 SAVER

£11.00 child

£14.50 Adult **£4.20** Child Friends and Family Veterans

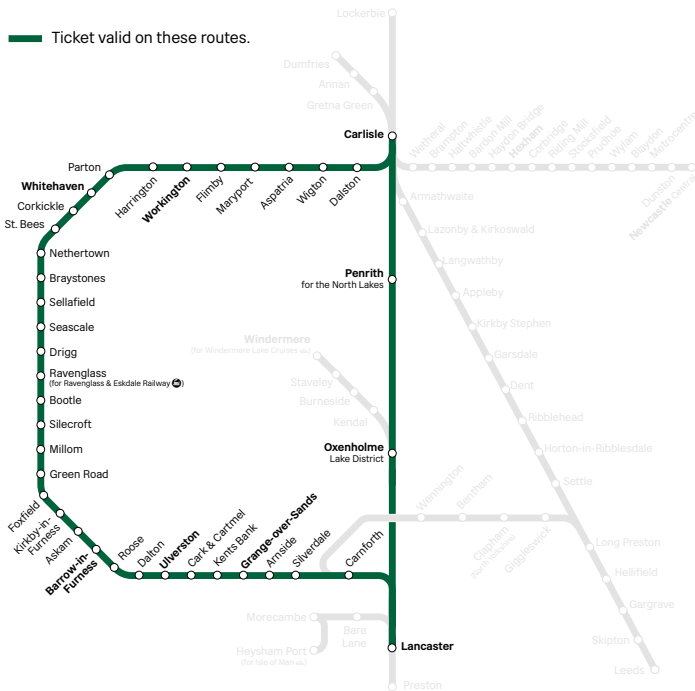


Tickets - Rovers and Rangers

Cumbria Round Robin Ranger

Take the train in either direction on this circular tour of Cumbria taking in the Cumbrian Coast, Furness line and the West Coast main line.

An exciting day out with plenty of places to explore, including the Border city of Carlisle, Georgian Whitehaven on the coast, the red-rose city of Lancaster and the market town of Penrith in the Eden Valley, and don't forget the Laurel and Hardy museum in Ulverston!



Tickets - Rovers and Rangers

Lakes Day Ranger

Take the train, then hop on a bus and discover more of The Lake District, or even take a cruise on Windermere.

One ticket covers you on the train, Stagecoach buses and a single half lake cruise on Windermere Lake Cruises scheduled services.



£33.70 adult

£22.25 16-25, 26-30, Senior, Two Together, HM Forces and Disabled Person's Railcard

£16.85 child

£16.85 16-17 SAVER

£22.25 Adult £6.40 Child Friends and Family Veterans

£25.90 adult

£50.80 family ticket
Family ticket valid for up to four people travelling together. Maximum two adults. Two adults can travel without a child.

£12.95 child

railcard discount prices
£17.10 16-25, 26-30, Senior, Two Together, HM Forces and Disabled Person's Railcard



Tickets - Rovers and Rangers

Explorer 55 ticket, exclusively for over 55's!

Leave the car at home and discover great days out with the freedom of rail when you buy our Explorer 55 ticket, our exclusive day ticket for over 55!

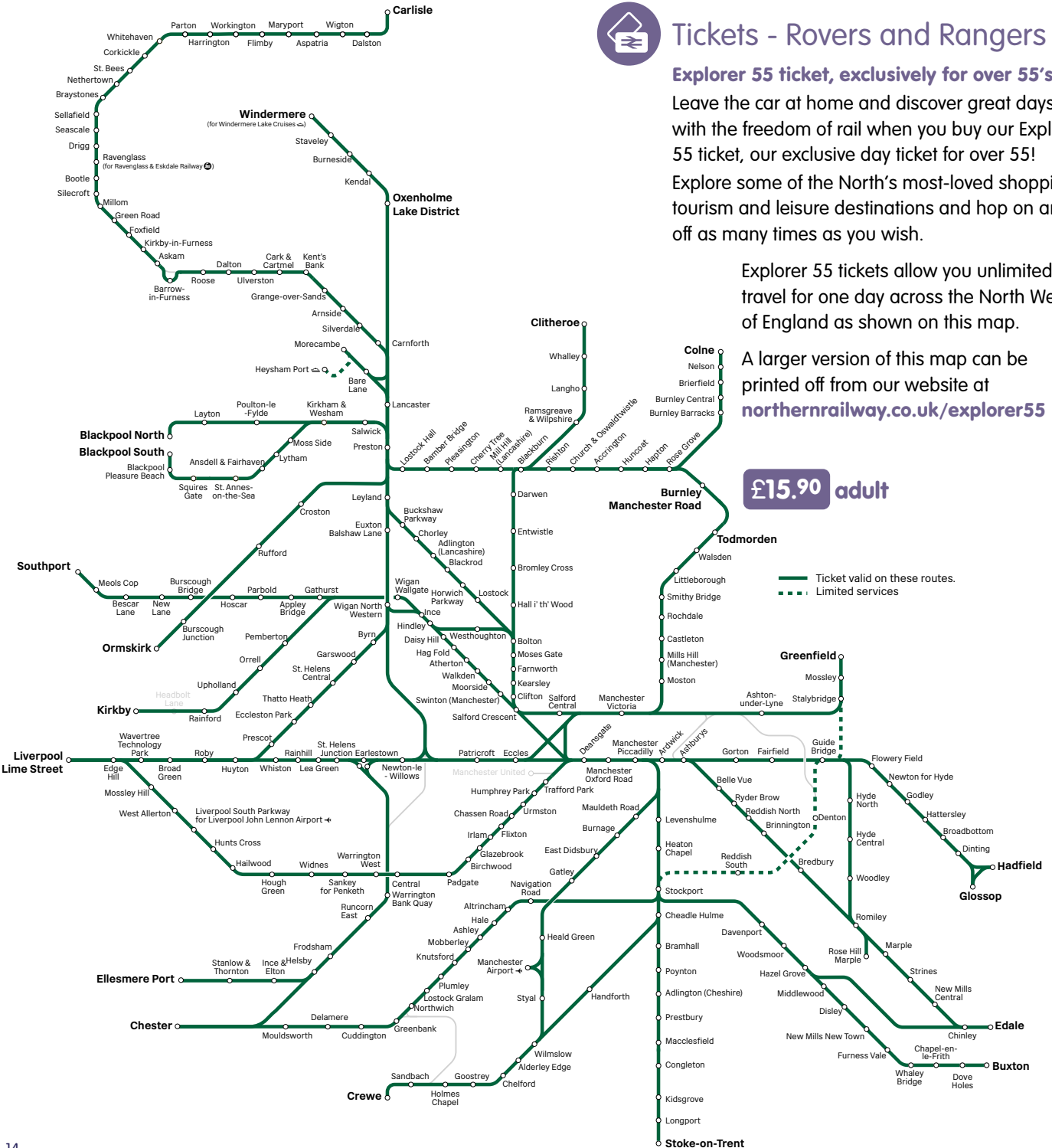
Explore some of the North's most-loved shopping, tourism and leisure destinations and hop on and off as many times as you wish.

Explorer 55 tickets allow you unlimited travel for one day across the North West of England as shown on this map.

A larger version of this map can be printed off from our website at northernrailway.co.uk/explorer55

£15.90 adult

— Ticket valid on these routes.
- - - Limited services





Tickets - Rovers and Rangers

North West Round Robin

Take the train in either direction on this circular tour including the world famous Settle - Carlisle line.

An exciting day out with plenty of places to hop off and explore; from the old border city of Carlisle to Preston - granted city status in 2002 - taking in the Cumbrian market town of Penrith and the city of Leeds in the heart of West Yorkshire.



Ticket valid on these routes.

railcard discount prices

£42.80 adult

£28.25 16-25, 26-30, Senior, Two Together, HM Forces and Disabled Person's Railcard

£21.40 child

£21.40 16-17 SAVER

£28.25 Adult £8.15 Child Friends and Family

Train times

The Cumbrian Coast & Furness lines

- Carlisle
- Workington
- Whitehaven
- Sellafield
- Ravenglass for Eskdale
- Millom
- Barrow-in-Furness
- Ulverston
- Grange-over-Sands
- Lancaster
- Preston
- Manchester
- Manchester Airport



Request stops

Not all trains stop at stations along this route, but they will stop at them upon request. These stations have an **X** in the timetable when the train is due to pass through.

To stop the train whilst waiting at a request stop station - on seeing the train approach the station, raise your hand above your head so that the driver can see that you want the train to stop. In poor light, please raise something bright - but do not shine any bright lights towards the train.

To stop the train at a request stop station whilst on the train - please inform the conductor of the station that you require the train to stop at. The conductor can be found at the rear of the train. Do not use the emergency alarm to stop the train at a station unless there is an actual emergency.



Guide to timetable codes

The codes below are used on the following pages. Please check carefully, as train times may vary over the course of this timetable.

- a Arrival time.
 - d Departure time.
 - x Request stop station - see above section.
 - Metrolink connection available.
 - Airport.
 - Interchange with Ravenglass for Eskdale & Eskdale Railway.
 - SO Runs Saturdays only.
 - SX Runs Mondays to Fridays only.
 - ▲ Runs until 19 June.
 - Runs until 20 June.
 - Runs from 26 June.
 - ◆ Runs from 27 June.
 - ▣ Runs until 12 September.
 - ▣ Runs from 27 June until 12 September.
 - Runs from 19 September.
 - ▶ Runs until 05 September.
 - ± Runs from 12 September.
- DRY** Dry train. Alcohol in opened and unopened containers not permitted. Travel may also be refused if you are under the influence.

Carlisle - Barrow - Lancaster - Manchester

Monday to Saturday

		SX	SO	SO	SX		SO	SX
Carlisle	d	-	-	-	-	-	-	-
Dalston		-	-	-	-	-	-	-
Wigton		-	-	-	-	-	-	-
Aspatia		-	-	-	-	-	-	-
Maryport		-	-	-	-	-	-	-
Flimby		-	-	-	-	-	-	-
Workington		-	-	-	-	-	-	-
Harrington		-	-	-	-	-	-	-
Parton		-	-	-	-	-	-	-
Whitehaven	a	-	-	-	-	-	-	-
Whitehaven	d	-	-	-	-	-	-	-
Corkickle		-	-	-	-	-	-	-
St. Bees		-	-	-	-	-	-	-
Nethertown		-	-	-	-	-	-	-
Braystones		-	-	-	-	-	-	-
Sellafield		-	-	-	-	-	-	-
Seascale		-	-	-	-	-	-	-
Drigg		-	-	-	-	-	-	-
Ravenglass for Eskdale		-	-	-	-	-	-	-
Bootle		-	-	-	-	-	-	-
Silecroft		-	-	-	-	-	-	-
Millom	a	-	-	-	-	-	-	-
Millom	d	-	-	-	-	0610	-	-
Green Road		-	-	-	-	06x14	-	-
Foxfield		-	-	-	-	0618	-	-
Kirkby-in-Furness		-	-	-	-	06x22	-	-
Askam		-	-	-	-	0627	-	-
Barrow-in-Furness	a	-	-	-	-	0641	-	-
Barrow-in-Furness	d	0455	0455	0549	0549	0611	-	0649 0708
Roose		↓	↓	0553	0553	0615	-	0653 0653 0712
Dalton		↓	↓	0559	0559	0621	-	0700 0700 0718
Ulverston		0511	0511	0608	0608	0630	-	0708 0708 0727
Carl & Cartmel		↓	↓	0615	0615	0637	-	0715 0715 0734
Kents Bank		↓	↓	0619	0619	0641	-	↓ 0738
Grange-over-Sands		0523	0523	0623	0623	0645	-	0722 0722 0742
Arnside		0529	0529	0628	0628	0651	-	0727 0727 0749
Silverdale		↓	↓	0632	0632	0656	-	0732 0732 0754
Carnforth		0539	0539	0640	0640	0703	-	0739 0739 0801
Lancaster	a	0546	0546	0647	0648	0716	-	0746 0746 0812
Lancaster	d	0549	0549	0649	0651	-	-	0748 0748 -
Preston	a	0607	0607	0708	0709	-	-	0806 0806 -
Wigan North Western	a	0623	0623	0725	0724	-	-	0823 0823 -
Manchester Oxford Rd	a	0653	0654	0757	0754	-	-	0854 0856 -
Manchester Piccadilly	a	0700	0700	0801	0758	-	-	0859 0900 -
Manchester Airport	a	0719	0720	0820	0820	-	-	0918 0918 -

Notes

All services operate by Northern.

SO Runs Saturdays only.

SX Runs Mondays to Fridays only.

x Request stop station.

Carlisle - Barrow - Lancaster - Manchester

Monday to Saturday

		SX	SO		SO	SX		SX
Carlisle	d	-	-	0553	-	0616	0619	0710 0808
Dalston		-	-	0602	-	0624	0627	0719 0816
Wigton		-	-	0611	-	0635	0636	0731 0826
Aspatria		-	-	0622	-	0646	0648	0742 0836
Maryport		0548	-	0633	-	0700	0700	0755 0848
Fliemby		05x51	-	06x36	-	07x03	07x03	07x58 08x51
Workington		0558	-	0644	-	0711	0711	0806 0858
Harrington		0602	-	0648	-	0715	0715	0810 0902
Parton		06x11	-	06x57	-	07x24	07x24	08x18 09x11
Whitehaven	a	0616	-	0702	-	0729	0729	0824 0916
Whitehaven	d	0618	-	0704	-	0730	0730	0825 0918
Corkickle		0620	-	0706	-	0733	0733	0828 0920
St. Bees		0626	-	0712	-	0739	0739	0834 0928
Nethertown		06x30	-	-	-	↓	↓	↓
Braystones		06x33	-	↓	-	↓	↓	↓
Sellafield		0639	-	0724	-	0750	0750	0844 0939
Seascale		0643	-	0728	-	0754	0754	0848 0942
Drigg		06x46	-	07x31	-	07x57	07x57	08x51 09x45
Ravenglass for Eskdale	🚫	0650	-	0734	-	0801	0801	0854 0949
Bootle		06x55	-	07x40	-	08x07	08x07	09x00 09x54
Silecroft		07x02	-	07x46	-	08x13	08x13	09x06 10x01
Millom	a	0708	-	0753	-	0820	0820	0913 1007
Millom	d	0709	-	0753	-	0820	0820	0914 1008
Green Road		07x13	-	07x57	-	08x24	08x24	09x18 10x12
Foxfield		0717	-	0801	-	0828	0828	0922 1016
Kirkby-in-Furness		07x21	-	08x05	-	08x32	08x32	09x26 10x20
Askam		0726	-	0811	-	0838	0838	0931 1025
Barrow-in-Furness	a	0741	-	0826	-	0853	0853	0947 1040
Barrow-in-Furness	d	-	0747	0747	-	0849	-	0958 -
Roose		-	0751	0751	-	0853	-	1002 -
Dalton		-	0757	0757	-	0859	-	1008 -
Ulverston		-	0806	0806	-	0907	-	1017 -
Carl & Cartmel		-	0813	0813	-	0914	-	1024 -
Kents Bank		-	▼	▼	-	0918	-	1028 -
Grange-over-Sands		-	0820	0820	-	0922	-	1032 -
Arnsdale		-	0825	0825	-	0927	-	1039 -
Silverdale		-	0830	0830	-	0931	-	1043 -
Carnforth		-	0837	0838	-	0939	-	1056 -
Lancaster	a	-	0844	0845	-	0946	-	1107 -
Lancaster	d	-	0847	0847	-	0950	-	- -
Preston	a	-	0907	0907	-	1008	-	- -
Wigan North Western	a	-	0924	0924	-	1024	-	- -
Manchester Oxford Rd	a	-	0953	0954	-	1053	-	- -
Manchester Piccadilly 🚶	a	-	0957	0957	-	1057	-	- -
Manchester Airport ↵	a	-	1018	1017	-	1117	-	- -

Notes All services operate by Northern.

SO Runs Saturdays only.

SX Runs Mondays to Fridays only.

x Request stop station.

Carlisle - Barrow - Lancaster - Manchester

Monday to Saturday

		SO	SO	SX	SX	SO		SX	SO
Carlisle	d	0813	-	-	0902	0908	-	1013	1107 1107
Dalston		0821	-	-	0910	0916	-	1022	1115 1115
Wigton		0831	-	-	0920	0926	-	1031	1125 1125
Aspatria		0841	-	-	0930	0936	-	1042	1135 1135
Maryport		0852	-	-	0941	0947	-	1053	1146 1146
Fliemby		-	-	-	09x44	09x50	-	10x56	11x49 11x49
Workington		0902	-	-	0952	0958	-	1103	1157 1157
Harrington		0906	-	-	0956	1002	-	1107	1201 1201
Parton		09x14	-	-	10x05	10x10	-	11x16	12x09 12x09
Whitehaven	a	0920	-	-	1010	1016	-	1121	1215 1215
Whitehaven	d	0921	-	-	1012	1017	-	1123	1216 1216
Corkickle		0924	-	-	1014	1020	-	1125	1219 1219
St. Bees		0932	-	-	1020	1026	-	1135	1228 1228
Nethertown		↓	-	-	↓	↓	-	11x39	12x32
Braystones		↓	-	-	↓	↓	-	11x42	12x34
Sellafield		0942	-	-	1031	1037	-	1147	1238 1240
Seascale		0945	-	-	1035	1041	-	1151	1242 1244
Drigg		09x48	-	-	10x38	10x44	-	11x54	12x45 12x47
Ravenglass for Eskdale	🚫	0952	-	-	1042	1048	-	1157	1248 1250
Bootle		09x57	-	-	10x47	10x53	-	12x03	12x54 12x56
Silecroft		10x04	-	-	10x54	11x00	-	12x09	13x00 13x02
Millom	a	1010	-	-	1100	1106	-	1216	1307 1309
Millom	d	1010	-	-	1101	1107	-	1216	1307 1309
Green Road		10x14	-	-	11x05	11x11	-	12x20	13x11 13x13
Foxfield		1018	-	-	1109	1115	-	1224	1315 1317
Kirkby-in-Furness		10x22	-	-	11x13	11x19	-	12x28	13x19 13x21
Askam		1027	-	-	1118	1124	-	1233	1324 1326
Barrow-in-Furness	a	1042	-	-	1135	1139	-	1248	1339 1341
Barrow-in-Furness	d	-	1048	1048	-	-	1153	1250	- -
Roose		-	1052	1052	-	-	1157	1254	- -
Dalton		-	1058	1058	-	-	1203	1300	- -
Ulverston		-	1107	1107	-	-	1212	1308	- -
Carl & Cartmel		-	1114	1114	-	-	1219	1316	- -
Kents Bank		-	1118	1118	-	-	1223	1320	- -
Grange-over-Sands		-	1122	1122	-	-	1227	1324	- -
Arnsdale		-	1127	1127	-	-	1232	1330	- -
Silverdale		-	1131	1131	-	-	1236	1335	- -
Carnforth		-	1138	1138	-	-	1244	1342	- -
Lancaster	a	-	1145	1145	-	-	1251	1353	- -
Lancaster	d	-	1147	1149	-	-	1251	- -	- -
Preston	a	-	1205	1207	-	-	1310	- -	- -
Wigan North Western	a	-	1225	1224	-	-	▼	- -	- -
Manchester Oxford Rd	a	-	1253	1253	-	-	1353	- -	- -
Manchester Piccadilly 🚶	a	-	1257	1257	-	-	1357	- -	- -
Manchester Airport ↵	a	-	1317	1317	-	-	1417	- -	- -

Notes All services operate by Northern.

SO Runs Saturdays only.

SX Runs Mondays to Fridays only.

x Request stop station.

Carlisle - Barrow - Lancaster - Manchester

Monday to Saturday

		SX	SO	SO	SX	SX	SO
Carlisle	d	-	-	1210	-	-	1307 1408 - -
Dalston		-	-	1218	-	-	1315 1416 - -
Wigton		-	-	1227	-	-	1325 1426 - -
Aspatria		-	-	1238	-	-	1335 1436 - -
Maryport		-	-	1249	-	-	1346 1447 - -
Flimby		-	-	12x52	-	-	13x49 14x50 - -
Workington		-	-	1259	-	-	1357 1458 - -
Harrington		-	-	1303	-	-	1401 1502 - -
Parton		-	-	13x12	-	-	14x09 15x10 - -
Whitehaven	a	-	-	1317	-	-	1415 1516 - -
Whitehaven	d	-	-	1319	-	-	1416 1518 - -
Corkickle		-	-	1321	-	-	1419 1521 - -
St. Bees		-	-	1329	-	-	1430 1527 - -
Nethertown		-	-	-	-	-	- - - -
Braystones		-	-	↓	-	-	↓ ↓ ↓ - -
Sellafield		-	-	1340	-	-	1441 1538 - -
Seascale		-	-	1343	-	-	1444 1542 - -
Drigg		-	-	13x46	-	-	14x47 15x45 - -
Ravenglass for Eskdale 🚆		-	-	1350	-	-	1451 1549 - -
Bootle		-	-	13x56	-	-	14x56 15x54 - -
Silecroft		-	-	14x02	-	-	15x03 16x01 - -
Millom	a	-	-	1409	-	-	1509 1607 - -
Millom	d	-	-	1409	-	-	1511 1608 - -
Green Road		-	-	14x13	-	-	15x15 16x12 - -
Foxfield		-	-	1417	-	-	1519 1616 - -
Kirkby-in-Furness		-	-	14x21	-	-	15x23 16x20 - -
Askam		-	-	1426	-	-	1528 1625 - -
Barrow-in-Furness	a	-	-	1441	-	-	1543 1640 - -
Barrow-in-Furness	d	1352	1352	-	1450 1450	1550	- 1647 1647
Roose		▼	▼	-	1454 1454	1554	- 1651 1651
Dalton		1401	1401	-	1500 1500	1600	- 1658 1658
Ulverston		1410	1410	-	1509 1509	1608	- 1706 1706
Carl & Cartmel		1417	1417	-	1516 1516	1616	- 1713 1713
Kents Bank		▼	▼	-	1520 1520	1620	- 1717 1717
Grange-over-Sands		1423	1423	-	1524 1524	1624	- 1721 1721
Arnsdale		1429	1429	-	1529 1529	1630	- 1727 1727
Silverdale		1433	1433	-	1533 1533	1635	- 1731 1731
Carnforth		1440	1440	-	1540 1540	1642	- 1738 1738
Lancaster	a	1447	1447	-	1547 1547	1652	- 1745 1745
Lancaster	d	1450	1450	-	1548 1548	-	- 1747 1748
Preston	a	1508	1508	-	1606 1606	-	- 1806 1806
Wigan North Western	a	1524	1524	-	1623 1623	-	- 1823 1823
Manchester Oxford Rd	a	1553	1554	-	1653 1653	-	- 1853 1853
Manchester Piccadilly 🚆	a	1557	1558	-	1658 1658	-	- 1857 1857
Manchester Airport ↵	a	1617	1617	-	1717 1720	-	- 1917 1917

Notes All services operate by Northern.

SO Runs Saturdays only.

SX Runs Mondays to Fridays only.

x Request stop station.

Carlisle - Barrow - Lancaster - Manchester

Monday to Saturday

				SX	SX	SX	SO	SO
Carlisle	d	1441	-	1512 1559	-	-	-	1626 -
Dalston		1449	-	1520 1607	-	-	-	1634 -
Wigton		1458	-	1530 1617	-	-	-	1644 -
Aspatria		1509	-	1540 1627	-	-	-	1654 -
Maryport		1520	-	1551 1638	-	-	-	1705 -
Flimby		15x23	-	15x54 16x41	-	-	-	17x08 -
Workington		1530	-	1602 1648	-	-	-	1715 -
Harrington		1534	-	1606 1652	-	-	-	1720 -
Parton		15x43	-	16x14 17x01	-	-	-	17x29 -
Whitehaven	a	1548	-	1620 1708	-	-	-	1735 -
Whitehaven	d	1550	-	1621 -	-	-	-	1736 -
Corkickle		1553	-	1624 -	-	-	-	1739 -
St. Bees		1559	-	1630 -	-	-	-	1744 -
Nethertown		16x03	-	-	-	-	-	-
Braystones		16x05	-	↓	-	-	-	↓ -
Sellafield		1611	-	1641 -	-	1725	-	1755 -
Seascale		1615	-	1644 -	-	1728	-	1758 -
Drigg		16x18	-	16x48 -	-	17x31	-	18x01 -
Ravenglass for Eskdale 🚆		1622	-	1651 -	-	1735	-	1805 -
Bootle		16x28	-	16x57 -	-	17x41	-	18x11 -
Silecroft		16x35	-	17x04 -	-	17x47	-	18x17 -
Millom	a	1641	-	1711 -	-	1754	-	1824 -
Millom	d	1642	-	1712 -	-	1754	-	1825 -
Green Road		16x46	-	17x16 -	-	17x58	-	18x29 -
Foxfield		1650	-	1720 -	-	1802	-	1833 -
Kirkby-in-Furness		16x55	-	17x25 -	-	18x06	-	18x37 -
Askam		1700	-	1730 -	-	1811	-	1842 -
Barrow-in-Furness	a	1714	-	1745 -	-	1826	-	1857 -
Barrow-in-Furness	d	-	1719	-	-	1804	-	1855 - 1903
Roose		-	1723	-	-	1808	-	1859 - 1907
Dalton		-	1729	-	-	1814	-	1905 - 1913
Ulverston		-	1737	-	-	1823	-	1913 - 1921
Carl & Cartmel		-	1745	-	-	1830	-	1921 - 1929
Kents Bank		-	▼	-	-	1834	-	1925 - 1933
Grange-over-Sands		-	1752	-	-	1838	-	1929 - 1937
Arnsdale		-	1758	-	-	1844	-	1935 - 1943
Silverdale		-	1803	-	-	1849	-	1940 - 1947
Carnforth		-	1810	-	-	1856	-	1947 - 1955
Lancaster	a	-	1820	-	-	1906	-	1955 - 2003
Lancaster	d	-	-	-	-	-	-	1956 - 2003
Preston	a	-	-	-	-	-	-	2021 - 2026
Wigan North Western	a	-	-	-	-	-	-	-
Manchester Oxford Rd	a	-	-	-	-	-	-	-
Manchester Piccadilly 🚆	a	-	-	-	-	-	-	-
Manchester Airport ↵	a	-	-	-	-	-	-	-

Notes All services operate by Northern.

SO Runs Saturdays only.

SX Runs Mondays to Fridays only.

x Request stop station.

Carlisle - Barrow - Lancaster - Manchester

Monday to Saturday

		SX	SO	SO	SO	SO	SX	SX
					■	▲		
Carlisle	d	1707	-	1754	1846	-	-	-
Dalston		1715	-	1802	1854	-	-	-
Wigton		1725	-	1812	1904	-	-	-
Aspatria		1735	-	1822	1914	-	-	-
Maryport		1746	-	1833	1925	-	-	-
Flimby		17x49	-	18x36	19x28	-	-	-
Workington		1757	-	1844	1936	-	-	-
Harrington		1801	-	1848	1940	-	-	-
Parton		18x09	-	18x56	19x49	-	-	-
Whitehaven	a	1816	-	1902	1956	-	-	-
Whitehaven	d	1818	-	1903	-	-	-	-
Corkickle		1820	-	1906	-	-	-	-
St. Bees		1827	-	1914	-	-	-	-
Nethertown		18x31	-	-	-	-	-	-
Braystones		18x34	-	↓	-	-	-	-
Sellafield		1840	-	1927	-	-	-	-
Seascale		1843	-	1932	-	-	-	-
Drigg		▼	-	19x35	-	-	-	-
Ravenglass for Eskdale 🚚		1849	-	1939	-	-	-	-
Bootle		↓	-	19x45	-	-	-	-
Silecroft		↓	-	19x51	-	-	-	-
Millom	a	1905	-	1958	-	-	-	-
Millom	d	1905	-	2001	-	-	-	2029
Green Road		19x09	-	20x05	-	-	-	20x33
Foxfield		1913	-	2009	-	-	-	2037
Kirkby-in-Furness		19x17	-	20x13	-	-	-	20x41
Askam		1922	-	2019	-	-	-	2046
Barrow-in-Furness	a	1937	-	2036	-	-	-	2101
Barrow-in-Furness	d	-	1945	1945	-	2042	2042	2045
Roose		-	1949	1949	-	2046	2046	2049
Dalton		-	1955	1955	-	2052	2052	2055
Ulverston		-	2004	2004	-	2101	2101	2104
Cark & Cartmel		-	2011	2011	-	2108	2108	2111
Kents Bank		-	2015	2015	-	2112	2112	2115
Grange-over-Sands		-	2019	2019	-	2116	2116	2119
Arnside		-	2024	2024	-	2122	2122	2125
Silverdale		-	2028	2028	-	2127	2127	2130
Carnforth		-	2036	2040	-	2134	2134	2137
Lancaster	a	-	2043	2047	-	2142	2143	2147
Lancaster	d	-	2044	2047	-	2143	-	-
Preston	a	-	2102	2105	-	2205	-	-
Wigan North Western	a	-	▼	▼	-	-	-	-
Manchester Oxford Rd	a	-	2142	2144	-	-	-	-
Manchester Piccadilly 🚆	a	-	2146	2148	-	-	-	-
Manchester Airport ↵	a	-	2203	2204	-	-	-	-

Notes	All services operate by Northern.
SO Runs Saturdays only.	▲ Runs until 19 June.
SX Runs Mondays to Fridays only.	■ Runs from 26 June.
x Request stop station.	

Carlisle - Barrow - Lancaster - Manchester

Monday to Saturday

		SO	SX	SO	SO	SO	SO	SX	SO	
				DRY	■	▲	DRY		SO	
Carlisle	d	-	1909	1909	-	-	2000	-	2055	2106
Dalston		-	1917	1917	-	-	2008	-	2103	2114
Wigton		-	1927	1927	-	-	2018	-	2113	2124
Aspatria		-	1937	1937	-	-	2028	-	2123	2134
Maryport		-	1948	1948	-	-	2039	-	2134	2145
Flimby		-	19x51	19x51	-	-	20x42	-	21x37	21x48
Workington		-	1959	1959	-	-	2050	-	2145	2156
Harrington		-	2003	2003	-	-	2054	-	2149	2200
Parton		-	20x11	20x11	-	-	21x02	-	21x57	22x08
Whitehaven	a	-	2016	2019	-	-	2109	-	2204	2215
Whitehaven	d	-	2018	2020	-	-	-	-	-	-
Corkickle		-	2020	2023	-	-	-	-	-	-
St. Bees		-	2028	2028	-	-	-	-	-	-
Nethertown		-	20x32	20x32	-	-	-	-	-	-
Braystones		-	20x34	20x35	-	-	-	-	-	-
Sellafield		-	2040	2040	-	-	-	-	-	-
Seascale		-	2044	2044	-	-	-	-	-	-
Drigg		-	20x47	20x47	-	-	-	-	-	-
Ravenglass for Eskdale 🚚		-	2050	2050	-	-	-	-	-	-
Bootle		-	20x56	20x56	-	-	-	-	-	-
Silecroft		-	21x02	21x02	-	-	-	-	-	-
Millom	a	-	2109	2109	-	-	-	-	-	-
Millom	d	2059	2109	2109	-	-	-	-	2200	-
Green Road		▼	21x13	21x13	-	-	-	-	22x04	-
Foxfield		2106	2117	2117	-	-	-	-	2208	-
Kirkby-in-Furness		▼	21x21	21x21	-	-	-	-	22x12	-
Askam		2115	2126	2126	-	-	-	-	2217	-
Barrow-in-Furness	a	2129	2142	2141	-	-	-	-	2231	-
Barrow-in-Furness	d	-	2145	-	2146	2146	-	-	-	-
Roose		-	2149	-	2150	2150	-	-	-	-
Dalton		-	2155	-	2156	2156	-	-	-	-
Ulverston		-	2204	-	2204	2204	-	-	-	-
Cark & Cartmel		-	2211	-	2212	2212	-	-	-	-
Kents Bank		-	2215	-	2216	2216	-	-	-	-
Grange-over-Sands		-	2219	-	2220	2220	-	-	-	-
Arnside		-	2226	-	2226	2226	-	-	-	-
Silverdale		-	2230	-	2230	2230	-	-	-	-
Carnforth		-	2238	-	2238	2238	-	-	-	-
Lancaster	a	-	2246	-	2246	2248	-	-	-	-
Lancaster	d	-	2246	-	2246	-	-	-	-	-
Preston	a	-	2309	-	2310	-	-	-	-	-
Wigan North Western	a	-	-	-	-	-	-	-	-	-
Manchester Oxford Rd	a	-	-	-	-	-	-	-	-	-
Manchester Piccadilly 🚆	a	-	-	-	-	-	-	-	-	-
Manchester Airport ↵	a	-	-	-	-	-	-	-	-	-

Notes	All services operate by Northern.
SO Runs Saturdays only.	DRY Dry train. Alcohol in opened and unopened containers not permitted.
SX Runs Mondays to Fridays only.	Travel may also be refused if you are under the influence.
x Request stop station.	
▲ Runs until 19 June.	
■ Runs from 26 June.	

Carlisle - Barrow - Lancaster - Manchester

Monday to Saturday

	SO	SX
	DRY	
Carlisle	d 2149	2201
Dalston	2157	2209
Wigton	2206	2219
Aspatia	2217	2229
Maryport	2227	2241
Fimby	22x31	22x44
Workington	2237	2251
Harrington	2241	2255
Parton	22x51	23x04
Whitehaven	a 2257	2310
Whitehaven	d -	-
Corkickle	-	-
St. Bees	-	-
Nethertown	-	-
Braystones	-	-
Sellafield	-	-
Seascale	-	-
Drigg	-	-
Ravenglass for Eskdale	-	-
Bootle	-	-
Silecroft	-	-
Millom	a -	-
Millom	d -	-
Green Road	-	-
Foxfield	-	-
Kirkby-in-Furness	-	-
Askam	-	-
Barrow-in-Furness	a -	-
Barrow-in-Furness	d -	-
Roose	-	-
Dalton	-	-
Ulverston	-	-
Carl & Cartmel	-	-
Kents Bank	-	-
Grange-over-Sands	-	-
Arnside	-	-
Silverdale	-	-
Carnforth	-	-
Lancaster	a -	-
Lancaster	d -	-
Preston	a -	-
Wigan North Western	a -	-
Manchester Oxford Rd	a -	-
Manchester Piccadilly	a -	-
Manchester Airport	a -	-

Notes	All services operate by Northern.
SO Runs Saturdays only.	DRY Dry train. Alcohol in opened and unopened containers not permitted.
SX Runs Mondays to Fridays only.	Travel may also be refused if you are under the influence.
x Request stop station.	

Carlisle - Barrow - Lancaster - Manchester

Sunday

Carlisle	d -	-	-	-	-	-	-	-	-
Dalston	-	-	-	-	-	-	-	-	-
Wigton	-	-	-	-	-	-	-	-	-
Aspatia	-	-	-	-	-	-	-	-	-
Maryport	-	-	-	-	-	-	-	-	0917
Fimby	-	-	-	-	-	-	-	-	09x20
Workington	-	-	-	-	-	-	-	-	0927
Harrington	-	-	-	-	-	-	-	-	0931
Parton	-	-	-	-	-	-	-	-	09x40
Whitehaven	a -	-	-	-	-	-	-	-	0945
Whitehaven	d -	-	-	-	-	-	-	-	0947
Corkickle	-	-	-	-	-	-	-	-	0949
St. Bees	-	-	-	-	-	-	-	-	0955
Nethertown	-	-	-	-	-	-	-	-	09x59
Braystones	-	-	-	-	-	-	-	-	10x01
Sellafield	-	-	-	-	-	-	-	-	1007
Seascale	-	-	-	-	-	-	-	-	1011
Drigg	-	-	-	-	-	-	-	-	10x14
Ravenglass for Eskdale	-	-	-	-	-	-	-	-	1017
Bootle	-	-	-	-	-	-	-	-	10x23
Silecroft	-	-	-	-	-	-	-	-	10x29
Millom	a -	-	-	-	-	-	-	-	1036
Millom	d -	-	-	-	-	-	0950	-	1036
Green Road	-	-	-	-	-	-	09x54	-	10x40
Foxfield	-	-	-	-	-	-	0958	-	1044
Kirkby-in-Furness	-	-	-	-	-	-	10x02	-	10x48
Askam	-	-	-	-	-	-	1007	-	1053
Barrow-in-Furness	a -	-	-	-	-	-	1021	-	1108
Barrow-in-Furness	d 0753	0841	0841	0905	0905	0950	-	1052	-
Roose	0757	0845	0845	0909	0954	-	-	1056	-
Dalton	0803	0851	0851	0915	1000	-	-	1102	-
Ulverston	0812	0859	0859	0922	0924	1008	-	1111	-
Carl & Cartmel	0819	0906	0906	0931	1015	-	-	1118	-
Kents Bank	0823	0910	0910	0935	1019	-	-	1122	-
Grange-over-Sands	0827	0914	0914	0934	0939	1023	-	1126	-
Arnside	0833	0920	0920	0940	0945	1029	-	1131	-
Silverdale	0838	0924	0924	0950	1033	-	-	1135	-
Carnforth	0845	0931	0931	0951	0957	1040	-	1143	-
Lancaster	a -	0938	0938	1001	-	1047	-	1150	-
Lancaster	d -	0945	0945	-	-	1048	-	1151	-
Preston	a -	1004	1004	-	-	1107	-	1209	-
Wigan North Western	a -	1023	1023	-	-	1123	-	1217	-
Manchester Oxford Rd	a -	1052	1052	-	-	1150	-	1252	-
Manchester Piccadilly	a -	1056	-	-	-	1156	-	1256	-
Manchester Airport	a -	1120	-	-	-	1220	-	1317	-

Notes	All services operate by Northern.
x Request stop station.	● Runs until 20 June.
	◆ Runs from 27 June.
	■ Runs from 27 June until 12 September.
	● Runs from 19 September.

		◆	●	◆	●			
Carlisle	d	-	0945	-	1023	1041	1106	- 1207 -
Dalston		-	0953	-	1032	1049	1114	- 1215 -
Wigton		-	1002	-	1041	1058	1124	- 1225 -
Aspatia		-	1013	-	1052	1109	1134	- 1235 -
Maryport		-	1024	1024	1103	1120	1145	- 1246 -
Flimby		-	▼	▼	11x06	11x23	11x48	- 12x49 -
Workington		-	1033	1033	1113	1130	1156	- 1258 -
Harrington		-	▼	▼	1117	1134	1200	- 1302 -
Parton		-	10x45	10x45	11x26	11x43	12x08	- 13x10 -
Whitehaven	a	-	1050	1050	1131	1148	1214	- 1316 -
Whitehaven	d	-	1051	1051	1133	1150	1216	- 1318 -
Corkickle		-	1054	1054	1135	1152	1219	- 1321 -
St. Bees		-	1059	1059	1141	1158	1227	- 1327 -
Nethertown		-	▼	▼	▼	▼	12x31	- -
Braystones		-	▼	▼	▼	▼	12x33	- -
Sellafield		-	1109	1109	1151	1208	1239	- 1337 -
Seascale		-	1113	1113	1154	1211	1243	- 1340 -
Drigg		-	11x16	11x16	11x57	12x14	12x46	- 13x43 -
Ravenglass for Eskdale 🚗		-	1119	1119	1201	1218	1249	- 1347 -
Bootle		-	11x25	11x25	12x06	12x23	12x55	- 13x52 -
Silecroft		-	11x31	11x31	12x13	12x30	13x01	- 13x59 -
Millom	a	-	1137	1137	1219	1236	1308	- 1405 -
Millom	d	-	1137	1137	1219	1236	1308	- 1406 -
Green Road		-	11x41	11x41	12x23	12x40	13x12	- 14x10 -
Foxfield		-	1145	1145	1227	1244	1316	- 1414 -
Kirkby-in-Furness		-	11x49	11x49	12x31	12x48	13x20	- 14x18 -
Askam		-	1154	1154	1236	1253	1325	- 1423 -
Barrow-in-Furness	a	-	1209	1209	1251	1308	1340	- 1438 -
Barrow-in-Furness	d	1141	-	-	1253	1317	- 1349 -	1447
Roose		1145	-	-	1257	1321	- 1353 -	1451
Dalton		1151	-	-	1303	1327	- 1359 -	1457
Ulverston		1200	-	-	1311	1335	- 1407 -	1505
Cark & Cartmel		1207	-	-	▼	▼	- 1414 -	1512
Kents Bank		1211	-	-	▼	▼	- 1418 -	1516
Grange-over-Sands		1215	-	-	1324	1348	- 1422 -	1520
Arnside		1220	-	-	1330	1354	- 1428 -	1526
Silverdale		1225	-	-	1335	1359	- 1432 -	1530
Carnforth		1232	-	-	1342	1406	- 1439 -	1537
Lancaster	a	1240	-	-	1352	1420	- 1446 -	1544
Lancaster	d	1240	-	-	-	-	- 1449 -	1547
Preston	a	1300	-	-	-	-	- 1507 -	1605
Wigan North Western	a	1323	-	-	-	-	- 1523 -	1623
Manchester Oxford Rd	a	1350	-	-	-	-	- 1550 -	1650
Manchester Piccadilly 🚶	a	1354	-	-	-	-	- 1600 -	1701
Manchester Airport 🚗	a	1417	-	-	-	-	- 1617 -	1718

Notes All services operate by Northern.
 x Request stop station. ● Runs until 20 June.
 ◆ Runs from 27 June.

Carlisle	d	1324	1401	-	1510	1616	-	1710	1810	-
Dalston		1332	1409	-	1518	1624	-	1718	1818	-
Wigton		1342	1419	-	1528	1634	-	1728	1828	-
Aspatia		1352	1429	-	1538	1644	-	1738	1838	-
Maryport		1403	1440	-	1549	1655	-	1749	1849	-
Flimby		14x06	14x43	-	15x52	16x58	-	17x52	18x52	-
Workington		1414	1451	-	1600	1706	-	1800	1900	-
Harrington		1418	1455	-	1604	1710	-	1804	1904	-
Parton		14x26	15x03	-	16x12	17x18	-	18x12	19x12	-
Whitehaven	a	1432	1508	-	1617	1724	-	1818	1919	-
Whitehaven	d	1433	1510	-	1619	1725	-	1819	-	-
Corkickle		1436	1512	-	1622	1728	-	1822	-	-
St. Bees		1441	1518	-	1629	1733	-	1828	-	-
Nethertown		▼	▼	-	16x33	▼	-	18x32	-	-
Braystones		▼	▼	-	16x35	▼	-	18x34	-	-
Sellafield		1451	1528	-	1642	1744	-	1840	-	-
Seascale		1455	1532	-	1646	1748	-	1844	-	-
Drigg		▼	15x35	-	16x49	17x51	-	18x47	-	-
Ravenglass for Eskdale 🚗		1501	1539	-	1652	1754	-	1850	-	-
Bootle		▼	15x44	-	16x58	18x00	-	18x56	-	-
Silecroft		▼	15x51	-	17x04	18x06	-	19x02	-	-
Millom	a	1516	1556	-	1711	1813	-	1909	-	-
Millom	d	1517	1556	-	1711	1814	-	1909	-	-
Green Road		▼	16x00	-	17x15	18x18	-	19x13	-	-
Foxfield		1524	1604	-	1719	1822	-	1917	-	-
Kirkby-in-Furness		15x28	16x08	-	17x23	18x26	-	19x21	-	-
Askam		1533	1613	-	1728	1831	-	1926	-	-
Barrow-in-Furness	a	1548	1628	-	1743	1846	-	1941	-	-
Barrow-in-Furness	d	1550	-	1646	1746	-	1851	-	-	1952
Roose		1554	-	1650	1750	-	1855	-	-	1956
Dalton		1600	-	1656	1756	-	1901	-	-	2002
Ulverston		1608	-	1705	1805	-	1909	-	-	2011
Cark & Cartmel		1616	-	1712	1812	-	1917	-	-	2018
Kents Bank		1620	-	1716	1816	-	1921	-	-	2022
Grange-over-Sands		1624	-	1720	1820	-	1925	-	-	2026
Arnside		1630	-	1725	1827	-	1931	-	-	2031
Silverdale		1635	-	1729	1832	-	1935	-	-	2035
Carnforth		1642	-	1737	1841	-	1943	-	-	2043
Lancaster	a	1652	-	1744	1850	-	1951	-	-	2050
Lancaster	d	-	-	1749	-	-	1951	-	-	2050
Preston	a	-	-	1807	-	-	2014	-	-	2108
Wigan North Western	a	-	-	1823	-	-	-	-	-	2124
Manchester Oxford Rd	a	-	-	1850	-	-	-	-	-	2151
Manchester Piccadilly 🚶	a	-	-	1900	-	-	-	-	-	2155
Manchester Airport 🚗	a	-	-	1917	-	-	-	-	-	2212

Notes All services operate by Northern.
 x Request stop station.

Carlisle - Barrow - Lancaster - Manchester

Sunday

Carlisle	d	-	1910	-	2010	2110
Dalston		-	1918	-	2018	2118
Wigton		-	1928	-	2028	2128
Aspatria		-	1938	-	2038	2138
Maryport		-	1949	-	2049	2149
Fimby		-	19x52	-	20x52	21x52
Workington		-	2000	-	2100	2200
Harrington		-	2004	-	2104	2204
Parton		-	20x12	-	21x12	22x12
Whitehaven	a	-	2019	-	2119	2219
Whitehaven	d	-	-	-	-	-
Corkickle		-	-	-	-	-
St. Bees		-	-	-	-	-
Nethertown		-	-	-	-	-
Braystones		-	-	-	-	-
Sellafield		-	-	-	-	-
Seascale		-	-	-	-	-
Drigg		-	-	-	-	-
Ravenglass for Eskdale	🚗	-	-	-	-	-
Bootle		-	-	-	-	-
Silecroft		-	-	-	-	-
Millom	a	-	-	-	-	-
Millom	d	1925	-	-	-	-
Green Road		19x29	-	-	-	-
Foxfield		1933	-	-	-	-
Kirkby-in-Furness		19x37	-	-	-	-
Askam		1942	-	-	-	-
Barrow-in-Furness	a	1957	-	-	-	-
Barrow-in-Furness	d	-	-	2046	-	-
Roose		-	-	2050	-	-
Dalton		-	-	2056	-	-
Ulverston		-	-	2105	-	-
Cark & Cartmel		-	-	2112	-	-
Kents Bank		-	-	2116	-	-
Grange-over-Sands		-	-	2120	-	-
Arnsdale		-	-	2126	-	-
Silverdale		-	-	2131	-	-
Carnforth		-	-	2138	-	-
Lancaster	a	-	-	2148	-	-
Lancaster	d	-	-	-	-	-
Preston	a	-	-	-	-	-
Wigan North Western	a	-	-	-	-	-
Manchester Oxford Rd	a	-	-	-	-	-
Manchester Piccadilly	🚗 a	-	-	-	-	-
Manchester Airport	↔ a	-	-	-	-	-

Notes

All services operate by Northern.

x Request stop station.



Discover fascinating heritage in a beautifully restored railway building on the platform at Millom station.

You can even pop-in and buy your train tickets for local and long distance travel.

Open all year (excluding January).

Facilities supported by Northern community grant funding.

 millomhac.co.uk

 MillomHAC

 MillomHAC

Scan the QR code to visit our website



Manchester - Lancaster - Barrow - Carlisle

Monday to Saturday

		SO	SX	SO	SX		SX	SO
Manchester Airport ⇄	d	-	-	-	-	-	-	-
Manchester Piccadilly ⇄	d	-	-	-	-	-	-	-
Manchester Oxford Rd	d	-	-	-	-	-	-	-
Wigan North Western	d	-	-	-	-	-	-	-
Preston	d	-	-	-	-	0518	-	-
Lancaster	a	-	-	-	-	0538	-	-
Lancaster	d	-	-	-	-	0538	-	-
Carnforth	-	-	-	-	-	0549	-	-
Silverdale	-	-	-	-	-	0555	-	-
Arnside	-	-	-	-	-	0559	-	-
Grange-over-Sands	-	-	-	-	-	0605	-	-
Kents Bank	-	-	-	-	-	0609	-	-
Cark & Cartmel	-	-	-	-	-	0613	-	-
Ulverston	-	-	-	-	-	0621	-	-
Dalton	-	-	-	-	-	0629	-	-
Roose	-	-	-	-	-	0635	-	-
Barrow-in-Furness	a	-	-	-	-	0643	-	-
Barrow-in-Furness	d	-	-	-	0558	0651	0750	0754
Askam	-	-	-	-	0608	0701	0800	0804
Kirkby-in-Furness	-	-	-	-	06:12	07x05	08x04	08x08
Foxfield	-	-	-	-	0616	0709	0808	0812
Green Road	-	-	-	-	06x20	07x13	08x11	08x15
Millom	a	-	-	-	0626	0719	0817	0821
Millom	d	-	-	-	0627	0719	0818	0822
Silecroft	-	-	-	-	06x32	07x24	08x23	08x27
Bootle	-	-	-	-	06x39	07x31	08x29	08x33
Ravenglass for Eskdale 🚫	-	-	-	-	0645	0737	0835	0839
Drigg	-	-	-	-	06x49	07x41	08x38	08x42
Seascale	-	-	-	-	0653	0745	0842	0846
Sellafield	-	-	-	-	0700	0753	0849	0852
Braystones	-	-	-	-	07x57	08x57	08x55	
Nethertown	-	-	-	-	07x59	08x59	08x58	
St. Bees	-	-	-	-	0713	0805	0900	0904
Corkickle	-	-	-	-	0719	0811	0905	0909
Whitehaven	a	-	-	-	0722	0814	0908	0913
Whitehaven	d	-	-	0630	0630	0723	0816	0909
Parton	-	-	06x33	06x33	07x27	08x20	09x13	09x18
Harrington	-	-	0642	0642	0736	0828	0921	0927
Workington	0548	0552	0648	0648	0742	0834	0927	0933
Fliimy	05x52	05x56	06x52	06x52	07x46	08x39	09x32	09x37
Maryport	0556	0600	0656	0656	0750	0843	0936	0941
Aspatria	0606	0610	0706	0706	0800	0853	0946	0951
Wigton	0618	0622	0718	0718	0812	0904	0957	1003
Dalston	0627	0631	0727	0727	0821	0913	1006	1012
Carlisle	a	0638	0642	0739	0738	0832	0925	1017

Notes

All services operate by Northern.

SO Runs Saturdays only.

SX Runs Mondays to Fridays only.

x Request stop station.

Manchester - Lancaster - Barrow - Carlisle

Monday to Saturday

		SO	SX	SO	SX	SO	SX	SX	SO
Manchester Airport ⇄	d	0524	0525	-	-	-	-	-	0728
Manchester Piccadilly ⇄	d	0543	0544	-	-	-	-	-	0746
Manchester Oxford Rd	d	0547	0548	-	-	-	-	-	0749
Wigan North Western	d	0616	0616	-	-	-	-	-	0820
Preston	d	0644	0644	-	-	-	-	-	0843
Lancaster	a	0701	0701	-	-	-	-	-	0900
Lancaster	d	0702	0702	0736	-	0823	0823	-	0900
Carnforth	0712	0712	0746	-	0832	0833	-	0911	0912
Silverdale	0717	0717	0752	-	0838	0839	-	0916	0917
Arnside	0721	0721	0756	-	0842	0843	-	0920	0921
Grange-over-Sands	0726	0726	0802	-	0848	0849	-	0926	0927
Kents Bank	0730	0730	0806	-	0853	0853	-	0929	0930
Cark & Cartmel	0734	0734	0810	-	0854	0857	-	0933	0934
Ulverston	0741	0741	0818	-	0902	0905	-	0941	0942
Dalton	0750	0750	0827	-	0910	0914	-	0949	0950
Roose	0756	0756	0833	-	0920	0920	-	0955	0956
Barrow-in-Furness	a	0802	0802	0840	-	0922	0927	-	1001
Barrow-in-Furness	d	-	-	-	0917	-	-	0927	-
Askam	-	-	-	0927	-	-	-	0937	-
Kirkby-in-Furness	-	-	-	09:31	-	-	-	09x41	-
Foxfield	-	-	-	0935	-	-	-	0945	-
Green Road	-	-	-	09x38	-	-	-	09x48	-
Millom	a	-	-	0943	-	-	-	0954	-
Millom	d	-	-	0944	-	-	-	0955	-
Silecroft	-	-	-	09x48	-	-	-	09x59	-
Bootle	-	-	-	09x55	-	-	-	10x06	-
Ravenglass for Eskdale 🚫	-	-	-	1001	-	-	-	1012	-
Drigg	-	-	-	10x04	-	-	-	10x15	-
Seascale	-	-	-	1008	-	-	-	1019	-
Sellafield	-	-	-	1014	-	-	-	1032	-
Braystones	-	-	-	1027	-	-	-	1042	-
Nethertown	-	-	-	1033	-	-	-	1047	-
St. Bees	-	-	-	1035	-	-	-	1050	-
Whitehaven	a	-	-	1037	-	-	-	1051	-
Whitehaven	d	-	-	10x40	-	-	-	10x55	-
Parton	-	-	-	1049	-	-	-	1103	-
Harrington	-	-	-	1055	-	-	-	1109	-
Workington	-	-	-	10x59	-	-	-	11x14	-
Fliimy	-	-	-	1103	-	-	-	1117	-
Maryport	-	-	-	1113	-	-	-	1127	-
Aspatria	-	-	-	1124	-	-	-	1138	-
Wigton	-	-	-	1133	-	-	-	1147	-
Dalston	-	-	-	1144	-	-	-	1158	-
Carlisle	a	-	-	-	-	-	-	-	-

Notes

All services operate by Northern.

SO Runs Saturdays only.

SX Runs Mondays to Fridays only.

x Request stop station.

Manchester - Lancaster - Barrow - Carlisle

Monday to Saturday

			SO	SX		SO	SX	SO
Manchester Airport ⇄ d	-	-	0928	0927	-	1028	-	-
Manchester Piccadilly ⇄ d	-	-	0948	0948	-	1047	-	-
Manchester Oxford Rd d	-	-	0951	0951	-	1050	-	-
Wigan North Western d	-	-	1021	1021	-	1121	-	-
Preston d	-	-	1045	1045	-	1144	-	-
Lancaster a	-	-	1102	1102	-	1202	-	-
Lancaster d	-	1013	1102	1103	-	1202	-	1301
Carnforth	-	1023	1112	1112	-	1212	-	1311
Silverdale	-	1029	1117	1118	-	1217	-	1317
Arnside	-	1033	1121	1122	-	1222	-	1321
Grange-over-Sands	-	1039	1127	1128	-	1227	-	1327
Kents Bank	-	1043	▼	▼	-	1231	-	1331
Cark & Cartmel	-	1047	1132	1133	-	1235	-	1335
Ulverston	-	1055	1140	1141	-	1242	-	1343
Dalton	-	1103	1148	1149	-	1251	-	1352
Roose	-	1109	▼	▼	-	1257	-	1358
Barrow-in-Furness a	-	1117	1200	1201	-	1303	-	1405
Barrow-in-Furness d	1022	1118	-	-	1206	-	1316	1316
Askam	1032	1128	-	-	1216	-	1326	1326
Kirkby-in-Furness	10x36	11x32	-	-	12x20	-	13x30	13x30
Foxfield	1040	1136	-	-	1224	-	1334	1334
Green Road	10x43	11x40	-	-	12x27	-	13x37	13x37
Millom a	1049	1146	-	-	1233	-	1343	1343
Millom d	1050	1146	-	-	1234	-	1344	1344
Silecroft	10x54	11x51	-	-	12x38	-	13x48	13x48
Bootle	11x01	11x57	-	-	12x45	-	13x55	13x55
Ravenglass for Eskdale 🚫	1107	1203	-	-	1251	-	1401	1401
Drigg	11x10	12x06	-	-	12x54	-	14x04	14x04
Seascale	1114	1210	-	-	1257	-	1407	1407
Sellafield	1122	1217	-	-	1303	-	1413	1413
Braystones	11x26	▼	-	-	13x07	-	▼	14x16
Nethertown	11x28	▼	-	-	13x09	-	▼	14x19
St. Bees	1134	1227	-	-	1328	-	1426	1427
Corkickle	1140	1232	-	-	1334	-	1432	1433
Whitehaven a	1143	1235	-	-	1336	-	1434	1436
Whitehaven d	1145	1236	-	-	1338	-	1438	1438
Parton	11x48	▼	-	-	13x41	-	▼	14x41
Harrington	1157	▼	-	-	1350	-	1450	1450
Workington	1203	1253	-	-	1356	-	1456	1456
Flimby	12x07	▼	-	-	14x00	-	▼	15x00
Maryport	1211	1301	-	-	1404	-	1505	1505
Aspatria	1221	1311	-	-	1414	-	1515	1515
Wigton	1233	1323	-	-	1426	-	1526	1526
Dalston	1242	▼	-	-	1435	-	▼	1535
Carlisle a	1253	1341	-	-	1447	-	1546	1546

Notes All services operate by Northern.

SO Runs Saturdays only.

SX Runs Mondays to Fridays only.

x Request stop station.

Manchester - Lancaster - Barrow - Carlisle

Monday to Saturday

			SX		SX	SO	SO	SX	SO	SX
Manchester Airport ⇄ d	-	-	1228	-	-	1328	1328	-	-	-
Manchester Piccadilly ⇄ d	-	-	1247	-	-	1347	1347	-	-	-
Manchester Oxford Rd d	-	-	1250	-	-	1350	1350	-	-	-
Wigan North Western d	-	-	1321	-	-	1421	1421	-	-	-
Preston d	-	-	1345	-	-	1445	1445	-	-	-
Lancaster a	-	-	1402	-	-	1502	1502	-	-	-
Lancaster d	1313	-	1402	-	-	1503	1503	-	-	-
Carnforth	1323	-	1412	-	-	1512	1512	-	-	-
Silverdale	1329	-	1417	-	-	1517	1517	-	-	-
Arnside	1333	-	1421	-	-	1521	1522	-	-	-
Grange-over-Sands	1339	-	1427	-	-	1527	1527	-	-	-
Kents Bank	1343	-	1430	-	-	1530	1531	-	-	-
Cark & Cartmel	1347	-	1434	-	-	1534	1535	-	-	-
Ulverston	1355	-	1442	-	-	1542	1542	-	-	-
Dalton	1403	-	1450	-	-	1550	1551	-	-	-
Roose	1409	-	1456	-	-	1556	1557	-	-	-
Barrow-in-Furness a	1417	-	1503	-	-	1603	1604	-	-	-
Barrow-in-Furness d	1418	1449	-	1544	1544	-	-	1611	1615	-
Askam	1428	1459	-	1554	1554	-	-	1621	1625	-
Kirkby-in-Furness	14x32	15x03	-	15x58	15x58	-	-	16x25	16x29	-
Foxfield	1436	1507	-	1602	1602	-	-	1629	1634	-
Green Road	14x40	15x10	-	16x05	16x05	-	-	16x32	16x37	-
Millom a	1446	1516	-	1611	1611	-	-	1638	1643	-
Millom d	1446	1517	-	1612	1612	-	-	1639	1644	-
Silecroft	14x50	15x21	-	16x16	16x16	-	-	16x43	16x48	-
Bootle	14x57	15x28	-	16x23	16x23	-	-	16x50	16x55	-
Ravenglass for Eskdale 🚫	1503	1534	-	1629	1629	-	-	1656	1701	-
Drigg	15x06	15x37	-	16x32	16x32	-	-	16x59	17x04	-
Seascale	1509	1541	-	1635	1635	-	-	1702	1708	-
Sellafield	1515	1547	-	1641	1641	-	-	1708	1712	-
Braystones	▼	▼	-	▼	▼	-	-	17x11	-	-
Nethertown	▼	▼	-	▼	▼	-	-	17x14	-	-
St. Bees	1527	1600	-	1652	1652	-	-	1719	-	-
Corkickle	1533	1606	-	1657	1657	-	-	1724	-	-
Whitehaven a	1536	1608	-	1700	1700	-	-	1728	-	-
Whitehaven d	1540	1612	-	1701	1701	-	-	1729	-	-
Parton	15x45	16x15	-	17x05	17x05	-	-	17x33	-	-
Harrington	1553	1624	-	1713	1713	-	-	1741	-	-
Workington	1559	1633	-	1719	1719	-	-	1747	-	-
Flimby	16x04	16x37	-	17x24	17x24	-	-	17x52	-	-
Maryport	1608	1643	-	1728	1728	-	-	1756	-	-
Aspatria	1618	1653	-	1738	1738	-	-	1806	-	-
Wigton	1629	1705	-	1749	1749	-	-	1817	-	-
Dalston	1638	1714	-	1759	1759	-	-	1826	-	-
Carlisle a	1651	1725	-	1810	1811	-	-	1841	-	-

Notes All services operate by Northern.

SO Runs Saturdays only.

SX Runs Mondays to Fridays only.

x Request stop station.

Manchester - Lancaster - Barrow - Carlisle

Monday to Saturday

		SX	SX	SO	SO	SO	SX			
Manchester Airport ⇄	d	-	-	1528	1528	-	-	1628	1626	
Manchester Piccadilly ⇄	d	-	-	1547	1547	-	-	1647	1648	
Manchester Oxford Rd	d	-	-	1551	1551	-	-	1650	1659	
Wigan North Western	d	-	-	1615	1618	-	-	1721	▼	
Preston	d	-	1532	1634	1645	-	-	1745	1745	
Lancaster	a	-	1553	1651	1702	-	-	1802	1802	
Lancaster	d	-	1612	1652	1704	-	1732	-	1802	1802
Carnforth	-	1622	1701	1713	-	1742	-	1812	1812	
Silverdale	-	1628	1706	1718	-	1747	-	1817	1817	
Arnside	-	1632	1710	1722	-	1752	-	1821	1821	
Grange-over-Sands	-	1638	1716	1728	-	1758	-	1827	1827	
Kents Bank	-	1642	1719	1731	-	1801	-	1830	1830	
Cark & Cartmel	-	1646	1723	1735	-	1805	-	1834	1834	
Ulverston	-	1654	1731	1743	-	1813	-	1842	1842	
Dalton	-	1702	1739	1751	-	1821	-	1850	1850	
Roose	-	1708	1745	1757	-	1827	-	1856	1856	
Barrow-in-Furness	a	-	1716	1751	1803	-	1835	-	1902	1903
Barrow-in-Furness	d	-	1717	-	-	1807	-	1857	-	
Askam	-	1728	-	-	1817	-	1907	-	-	
Kirkby-in-Furness	-	17x32	-	-	18x21	-	19x11	-	-	
Foxfield	-	1736	-	-	1825	-	1915	-	-	
Green Road	-	17x39	-	-	18x28	-	19x19	-	-	
Millom	a	-	1745	-	1834	-	1925	-	-	
Millom	d	-	1745	-	1834	-	1925	-	-	
Silecroft	-	17x50	-	-	-	-	19x29	-	-	
Bootle	-	17x56	-	-	▼	-	19x36	-	-	
Ravenglass for Eskdale 🚗	-	1802	-	-	1849	-	1942	-	-	
Drigg	-	18x05	-	-	18x52	-	19x45	-	-	
Seascale	-	1809	-	-	1856	-	1948	-	-	
Sellafield	-	1814	-	-	1900	-	1953	-	-	
Braystones	-	▼	-	-	▼	-	▼	-	-	
Nethertown	-	-	-	-	-	-	-	-	-	
St. Bees	-	1826	-	-	1912	-	2003	-	-	
Corkickle	-	1832	-	-	1917	-	2008	-	-	
Whitehaven	a	-	1834	-	1920	-	2012	-	-	
Whitehaven	d	1749	1835	-	1921	-	2013	-	-	
Parton	17x52	18x39	-	-	19x25	-	20x17	-	-	
Harrington	1801	1847	-	-	1933	-	2025	-	-	
Workington	1807	1853	-	-	1943	-	2035	-	-	
Flimby	18x11	18x58	-	-	19x47	-	20x40	-	-	
Maryport	1816	1902	-	-	1953	-	2044	-	-	
Aspatria	1826	1912	-	-	2003	-	2054	-	-	
Wigton	1837	1923	-	-	2014	-	2105	-	-	
Dalston	1846	1932	-	-	2023	-	2114	-	-	
Carlisle	a	1857	1943	-	2034	-	2125	-	-	

Notes All services operate by Northern.

SO Runs Saturdays only.

SX Runs Mondays to Fridays only.

x Request stop station.

Manchester - Lancaster - Barrow - Carlisle

Monday to Saturday

		SX	SO	SX	SX	SO	SX	SO	
Manchester Airport ⇄	d	-	-	-	-	-	1828	1828	-
Manchester Piccadilly ⇄	d	-	-	-	-	-	1847	1847	-
Manchester Oxford Rd	d	-	-	-	-	-	1852	1851	-
Wigan North Western	d	-	-	-	-	-	1920	1919	-
Preston	d	-	-	-	-	-	1944	1945	-
Lancaster	a	-	-	-	-	-	2001	2002	-
Lancaster	d	-	1835	-	-	1913	1913	2002	2003
Carnforth	-	1845	-	-	-	1923	1923	2011	2012
Silverdale	-	1851	-	-	-	1929	1929	2016	2017
Arnside	-	1855	-	-	-	1933	1933	2021	2021
Grange-over-Sands	-	1901	-	-	-	1939	1939	2026	2027
Kents Bank	-	1905	-	-	-	1943	1943	2030	2030
Cark & Cartmel	-	1909	-	-	-	1947	1947	2034	2035
Ulverston	-	1917	-	-	-	1955	1955	2042	2042
Dalton	-	1925	-	-	-	2003	2003	2050	2051
Roose	-	1931	-	-	-	2009	2009	2056	2057
Barrow-in-Furness	a	-	1939	-	-	2017	2017	2103	2103
Barrow-in-Furness	d	1912	-	1944	1944	2018	2018	-	2110
Askam	1922	-	1954	1954	2028	2028	-	-	2120
Kirkby-in-Furness	19x26	-	19x58	19x58	20x32	20x32	-	-	21x24
Foxfield	1930	-	2002	2002	2036	2036	-	-	2128
Green Road	19x33	-	20x05	20x05	20x40	20x40	-	-	21x32
Millom	a	1939	-	2011	2012	2045	2046	-	2138
Millom	d	1940	-	2011	-	2045	-	-	-
Silecroft	19x44	-	20x16	-	20x50	-	-	-	-
Bootle	19x51	-	20x22	-	20x56	-	-	-	-
Ravenglass for Eskdale 🚗	1957	-	2028	-	2102	-	-	-	-
Drigg	20x00	-	20x31	-	21x05	-	-	-	-
Seascale	2003	-	2035	-	2109	-	-	-	-
Sellafield	2012	-	2041	-	2115	-	-	-	-
Braystones	20x15	-	20x44	-	▼	-	-	-	-
Nethertown	20x18	-	20x47	-	▼	-	-	-	-
St. Bees	2027	-	2052	-	2124	-	-	-	-
Corkickle	2032	-	2057	-	2130	-	-	-	-
Whitehaven	a	2036	-	2101	-	2132	-	-	-
Whitehaven	d	2037	-	2102	-	2134	-	-	-
Parton	20x41	-	21x06	-	21x37	-	-	-	-
Harrington	2049	-	2114	-	2146	-	-	-	-
Workington	2055	-	2120	-	2152	-	-	-	-
Flimby	21x00	-	21x25	-	21x56	-	-	-	-
Maryport	2104	-	2128	-	2200	-	-	-	-
Aspatria	2114	-	-	-	2210	-	-	-	-
Wigton	2125	-	-	-	2221	-	-	-	-
Dalston	2134	-	-	-	2230	-	-	-	-
Carlisle	a	2145	-	-	2241	-	-	-	-

Notes All services operate by Northern.

SO Runs Saturdays only.

SX Runs Mondays to Fridays only.

x Request stop station.

Manchester - Lancaster - Barrow - Carlisle

Monday to Saturday

		SO	SX		SX	SO	SX	SO	SO	SO
								▲	■	■
Manchester Airport	← d	1926	1926	-	-	-	-	-	-	2210
Manchester Piccadilly	↔ d	1947	1947	-	-	-	-	-	-	2225
Manchester Oxford Rd	d	1950	1950	-	-	-	-	-	-	2229
Wigan North Western	d	2021	2021	-	-	-	-	-	-	2253
Preston	d	2045	2045	-	-	-	-	-	2211	2309
Lancaster	a	2102	2102	-	-	-	-	-	2231	2326
Lancaster	d	2103	2103	-	-	-	2208	2227	2232	2328
Carnforth		2113	2113	-	-	-	2218	2237	2242	2337
Silverdale		2118	2118	-	-	-	2224	2243	2248	2342
Arnside		2122	2122	-	-	-	2228	2247	2252	2347
Grange-over-Sands		2127	2127	-	-	-	2234	2253	2258	2354
Kents Bank		2131	2131	-	-	-	2238	2257	2302	2358
Cark & Cartmel		2135	2135	-	-	-	2242	2301	2306	0002
Ulverston		2142	2142	-	-	-	2250	2309	2314	0009
Dalton		2150	2150	-	-	-	2258	2317	2322	0018
Roose		2156	2156	-	-	-	2304	2323	2328	0024
Barrow-in-Furness	a	2203	2203	-	-	-	2312	2331	2336	0030
Barrow-in-Furness	d	-	-	2211	-	-	-	-	-	-
Askam		-	-	2221	-	-	-	-	-	-
Kirkby-in-Furness		-	-	22x25	-	-	-	-	-	-
Foxfield		-	-	2229	-	-	-	-	-	-
Green Road		-	-	22x33	-	-	-	-	-	-
Millom	a	-	-	2239	-	-	-	-	-	-
Millom	d	-	-	-	-	-	-	-	-	-
Silecroft		-	-	-	-	-	-	-	-	-
Bootle		-	-	-	-	-	-	-	-	-
Ravenglass for Eskdale 🚫		-	-	-	-	-	-	-	-	-
Drigg		-	-	-	-	-	-	-	-	-
Seascale		-	-	-	-	-	-	-	-	-
Sellafield		-	-	-	-	-	-	-	-	-
Braystones		-	-	-	-	-	-	-	-	-
Nethertown		-	-	-	-	-	-	-	-	-
St. Bees		-	-	-	-	-	-	-	-	-
Corkickle		-	-	-	-	-	-	-	-	-
Whitehaven	a	-	-	-	-	-	-	-	-	-
Whitehaven	d	-	-	-	2209	2209	-	-	-	-
Parton		-	-	-	22x12	22x12	-	-	-	-
Harrington		-	-	-	2221	2221	-	-	-	-
Workington		-	-	-	2227	2227	-	-	-	-
Flimby		-	-	-	22x32	22x32	-	-	-	-
Maryport		-	-	-	2236	2236	-	-	-	-
Aspatria		-	-	-	2246	-	-	-	-	-
Wigton		-	-	-	2257	-	-	-	-	-
Dalston		-	-	-	2306	-	-	-	-	-
Carlisle	a	-	-	-	2317	-	-	-	-	-

Notes	All services operate by Northern.
SO	Runs Saturdays only. ▲ Runs until 19 June.
SX	Runs Mondays to Fridays only. ■ Runs from 26 June.
x	Request stop station.

Manchester - Lancaster - Barrow - Carlisle

Monday to Saturday

		SO	SX
		▲	
Manchester Airport	← d	-	2210
Manchester Piccadilly	↔ d	-	2225
Manchester Oxford Rd	d	-	2229
Wigan North Western	d	-	2257
Preston	d	-	2315
Lancaster	a	-	2332
Lancaster	d	2328	2333
Carnforth		2338	2342
Silverdale		2344	2347
Arnside		2349	2352
Grange-over-Sands		2355	2358
Kents Bank		2358	0001
Cark & Cartmel		0002	0005
Ulverston		0011	0013
Dalton		0019	0021
Roose		0025	0027
Barrow-in-Furness	a	0032	0033
Barrow-in-Furness	d	-	-
Askam		-	-
Kirkby-in-Furness		-	-
Foxfield		-	-
Green Road		-	-
Millom	a	-	-
Millom	d	-	-
Silecroft		-	-
Bootle		-	-
Ravenglass for Eskdale 🚫		-	-
Drigg		-	-
Seascale		-	-
Sellafield		-	-
Braystones		-	-
Nethertown		-	-
St. Bees		-	-
Corkickle		-	-
Whitehaven	a	-	-
Whitehaven	d	-	-
Parton		-	-
Harrington		-	-
Workington		-	-
Flimby		-	-
Maryport		-	-
Aspatria		-	-
Wigton		-	-
Dalston		-	-
Carlisle	a	-	-

Notes	All services operate by Northern.
SO	Runs Saturdays only. ▲ Runs until 19 June.
SX	Runs Mondays to Fridays only.
x	Request stop station.

Manchester - Lancaster - Barrow - Carlisle

Sunday

	◆	◆	●	◆	●	▣		
Manchester Airport ⇐ d	-	-	-	-	-	0935		
Manchester Piccadilly ⇐ d	-	-	-	-	-	0952		
Manchester Oxford Rd d	-	-	-	-	-	0957		
Wigan North Western d	-	-	-	-	-	1027		
Preston d	-	-	-	-	-	1043		
Lancaster a	-	-	-	-	-	1100		
Lancaster d	-	-	-	-	1011	1101		
Carnforth	-	-	-	0855	1021	1021	1110	
Silverdale	-	-	-	0900	1027	1027	1115	
Arnside	-	-	-	0905	1031	1031	1119	
Grange-over-Sands	-	-	-	0911	1037	1037	1125	
Kents Bank	-	-	-	0914	1041	1041	1128	
Cark & Cartmel	-	-	-	0918	1045	1045	1132	
Ulverston	-	-	-	0927	1053	1053	1140	
Dalton	-	-	-	0935	1101	1101	1148	
Roose	-	-	-	0941	1107	1107	1154	
Barrow-in-Furness a	-	-	-	0948	1115	1115	1201	
Barrow-in-Furness d	-	0905	-	-	0950	1116	1116	-
Askam	-	0915	-	-	1000	1126	1126	-
Kirkby-in-Furness	-	09x19	-	-	10x04	11x30	11x30	-
Foxfield	-	0923	-	-	1008	1134	1134	-
Green Road	-	09x26	-	-	10x11	11x38	11x38	-
Millom a	-	0933	-	-	1017	1144	1144	-
Millom d	-	-	-	-	1017	1144	1144	-
Silecroft	-	-	-	-	10x22	11x48	11x48	-
Bootle	-	-	-	-	10x28	11x55	11x55	-
Ravenglass for Eskdale 🚗	-	-	-	-	1034	1201	1201	-
Drigg	-	-	-	-	10x37	12x04	12x04	-
Seascale	-	-	-	-	1041	1207	1207	-
Sellafield	-	-	-	-	1046	1213	1213	-
Braystones	-	-	-	-	10x50	↓	↓	-
Nethertown	-	-	-	-	10x52	↓	↓	-
St. Bees	-	-	-	-	1100	1225	1225	-
Corkickle	-	-	-	-	1106	1230	1230	-
Whitehaven a	-	-	-	-	1109	1233	1233	-
Whitehaven d	-	-	-	-	1016	1111	1234	1234
Parton	-	-	-	-	10x20	11x14	12x38	12x38
Harrington	-	-	-	-	1028	1123	1246	1246
Workington	0855	-	0940	0957	1034	1129	1252	1252
Flimby	09x00	-	09x45	10x02	10x39	11x33	12x57	12x57
Maryport	0904	-	0949	1006	1043	1137	1301	1301
Aspatria	0914	-	0959	1016	1053	1147	1311	1311
Wigton	0925	-	1010	1027	1104	1159	1322	1322
Dalston	0934	-	1019	1036	1113	1208	1331	1331
Carlisle a	0945	-	1030	1047	1124	1219	1342	1342

Notes	All services operate by Northern.
x Request stop station.	● Runs until 20 June.
	◆ Runs from 27 June.
	▣ Runs until 12 September.
	● Runs from 19 September.

Manchester - Lancaster - Barrow - Carlisle

Sunday

	●								
Manchester Airport ⇐ d	0935	-	1033	-	-	-	1242	-	1330
Manchester Piccadilly ⇐ d	0953	-	1054	-	-	-	1301	-	1348
Manchester Oxford Rd d	0957	-	1100	-	-	-	1306	-	1351
Wigan North Western d	1027	-	▼	-	-	-	1333	-	1421
Preston d	1043	-	1147	-	-	-	1358	-	1447
Lancaster a	1100	-	1204	-	-	-	1415	-	1504
Lancaster d	1101	-	1205	-	1314	-	1416	-	1505
Carnforth	1110	-	1214	-	1324	-	1425	-	1514
Silverdale	1115	-	1219	-	1330	-	1430	-	1519
Arnside	1119	-	1224	-	1334	-	1434	-	1523
Grange-over-Sands	1125	-	1229	-	1340	-	1439	-	1528
Kents Bank	1128	-	1233	-	1344	-	1443	-	1532
Cark & Cartmel	1132	-	1237	-	1348	-	1447	-	1536
Ulverston	1140	-	1244	-	1356	-	1454	-	1543
Dalton	1148	-	1252	-	1404	-	1502	-	1552
Roose	1154	-	1258	-	1410	-	1509	-	1558
Barrow-in-Furness a	1201	-	1305	-	1418	-	1515	-	1604
Barrow-in-Furness d	-	1218	-	1309	1419	1455	-	1558	-
Askam	-	1228	-	1319	1429	1505	-	1608	-
Kirkby-in-Furness	-	12x32	-	13x23	↓	15x09	-	16x12	-
Foxfield	-	1236	-	1327	↓	1513	-	1616	-
Green Road	-	12x39	-	13x30	↓	15x16	-	16x19	-
Millom a	-	1245	-	1336	1443	1522	-	1625	-
Millom d	-	1245	-	1336	1444	1523	-	1625	-
Silecroft	-	12x50	-	13x41	↓	15x28	-	16x30	-
Bootle	-	12x56	-	13x47	↓	15x34	-	16x36	-
Ravenglass for Eskdale 🚗	-	1302	-	1353	1459	1541	-	1642	-
Drigg	-	13x05	-	13x56	↓	15x44	-	16x45	-
Seascale	-	1309	-	1400	↓	1547	-	1649	-
Sellafield	-	1315	-	1405	1507	1551	-	1654	-
Braystones	-	↓	-	14x09	↓	↓	-	16x58	-
Nethertown	-	↓	-	14x11	↓	↓	-	17x00	-
St. Bees	-	1328	-	1416	1520	1601	-	1705	-
Corkickle	-	1333	-	1421	1525	1607	-	1710	-
Whitehaven a	-	1337	-	1425	1528	1609	-	1714	-
Whitehaven d	-	1338	-	1426	1529	1611	-	1716	-
Parton	-	13x42	-	14x30	15x33	16x14	-	17x20	-
Harrington	-	1350	-	1438	1541	1623	-	1728	-
Workington	-	1358	-	1444	1547	1629	-	1734	-
Flimby	-	14x03	-	14x49	15x52	16x33	-	17x39	-
Maryport	-	1408	-	1453	1556	1637	-	1743	-
Aspatria	-	1418	-	1503	1606	1647	-	1753	-
Wigton	-	1430	-	1514	1617	1659	-	1804	-
Dalston	-	1439	-	1523	1626	1708	-	1813	-
Carlisle a	-	1450	-	1534	1637	1719	-	1824	-

Notes	All services operate by Northern.
x Request stop station.	● Runs from 19 September.

Manchester - Lancaster - Barrow - Carlisle

Sunday

		▶	±						
Manchester Airport ↵	d	-	1530	1530	-	1630	-	-	-
Manchester Piccadilly 🚏	d	-	1548	1548	-	1648	-	-	-
Manchester Oxford Rd	d	-	1551	1551	-	1651	-	-	-
Wigan North Western	d	-	1623	1621	-	1718	-	-	-
Preston	d	-	1647	1657	-	1746	-	-	-
Lancaster	a	-	1704	1714	-	1803	-	-	-
Lancaster	d	1603	1705	1715	-	1804	-	-	1902
Carnforth		1612	1714	1724	-	1813	-	-	1913
Silverdale		1618	1720	1730	-	1818	-	-	1919
Arnside		1622	1724	1734	-	1822	-	-	1924
Grange-over-Sands		1628	1729	1739	-	1828	-	-	1930
Kents Bank		1632	1733	1743	-	1831	-	-	1933
Cark & Cartmel		1636	1737	1747	-	1835	-	-	1937
Ulverston		1644	1744	1754	-	1843	-	-	1946
Dalton		1652	1752	1802	-	1851	-	-	1954
Roose		1658	1758	1808	-	1857	-	-	2000
Barrow-in-Furness	a	1706	1805	1815	-	1903	-	-	2007
Barrow-in-Furness	d	1717	-	-	1825	-	1907	-	-
Askam		1728	-	-	1835	-	1917	-	-
Kirkby-in-Furness		17:32	-	-	18x39	-	19x21	-	-
Foxfield		1736	-	-	1843	-	1925	-	-
Green Road		17:39	-	-	18x46	-	19x28	-	-
Millom	a	1745	-	-	1853	-	1935	-	-
Millom	d	1746	-	-	-	-	-	-	-
Silecroft		17x50	-	-	-	-	-	-	-
Bootle		17:57	-	-	-	-	-	-	-
Ravenglass for Eskdale 🚏		1803	-	-	-	-	-	-	-
Drigg		18:06	-	-	-	-	-	-	-
Seascale		1809	-	-	-	-	-	-	-
Sellafield		1815	-	-	-	-	-	-	-
Braystones		18x18	-	-	-	-	-	-	-
Nethertown		18x21	-	-	-	-	-	-	-
St. Bees		1829	-	-	-	-	-	-	-
Corkickle		1834	-	-	-	-	-	-	-
Whitehaven	a	1838	-	-	-	-	-	-	-
Whitehaven	d	1839	-	-	-	-	1938	-	2030
Parton		18x43	-	-	-	-	19x41	-	20x33
Harrington		1851	-	-	-	-	1950	-	2042
Workington		1857	-	-	-	-	1956	-	2048
Flimby		19x02	-	-	-	-	20x01	-	20x53
Maryport		1906	-	-	-	-	2005	-	2057
Aspatria		1916	-	-	-	-	2015	-	2107
Wigton		1927	-	-	-	-	2026	-	2118
Dalston		1936	-	-	-	-	2035	-	2127
Carlisle	a	1947	-	-	-	-	2046	-	2138

Notes	All services operate by Northern.
x Request stop station.	▶ Runs until 05 September.
	± Runs from 12 September.

Manchester - Lancaster - Barrow - Carlisle

Sunday

Manchester Airport ↵	d	1830	1930	-
Manchester Piccadilly 🚏	d	1848	1948	-
Manchester Oxford Rd	d	1851	1951	-
Wigan North Western	d	1918	2022	-
Preston	d	1947	2046	-
Lancaster	a	2004	2104	-
Lancaster	d	2005	2104	2220
Carnforth		2014	2114	2230
Silverdale		2019	2119	2235
Arnside		2023	2123	2240
Grange-over-Sands		2029	2128	2246
Kents Bank		2032	2132	2249
Cark & Cartmel		2036	2136	2253
Ulverston		2044	2143	2301
Dalton		2052	2151	2309
Roose		2059	2157	2315
Barrow-in-Furness	a	2105	2204	2323
Barrow-in-Furness	d	-	-	-
Askam		-	-	-
Kirkby-in-Furness		-	-	-
Foxfield		-	-	-
Green Road		-	-	-
Millom	a	-	-	-
Millom	d	-	-	-
Silecroft		-	-	-
Bootle		-	-	-
Ravenglass for Eskdale 🚏		-	-	-
Drigg		-	-	-
Seascale		-	-	-
Sellafield		-	-	-
Braystones		-	-	-
Nethertown		-	-	-
St. Bees		-	-	-
Corkickle		-	-	-
Whitehaven	a	-	-	-
Whitehaven	d	-	-	-
Parton		-	-	-
Harrington		-	-	-
Workington		-	-	-
Flimby		-	-	-
Maryport		-	-	-
Aspatria		-	-	-
Wigton		-	-	-
Dalston		-	-	-
Carlisle	a	-	-	-

Notes	All services operate by Northern.
x Request stop station.	



Guide to timetable codes

The codes below are used on the following pages. Please check carefully, as train times may vary over the course of this timetable.

- a Arrival time.
- d Departure time.
- Rail replacement bus service.
- Metrolink connection available.
- Airport.
- Interchange with Windermere Lake Cruises.
- SO Runs Saturdays only.
- SX Runs Mondays to Fridays only.
- AWC Run by Avanti West Coast.
- TP Run by TransPennine Express.
- BHM To Birmingham New Street via Wolverhampton
- CRE To Crewe.
- EDB To Edinburgh Waverley
- EUS To London Euston.
- Via Wolverhampton and Birmingham New Street.
- GLC To Glasgow Central
- LIV To Liverpool Lime Street via St. Helens Central.
- ★ Runs until 19 June.
- Runs until 20 June.
- ◇ Runs from 26 June.
- ◆ Runs from 27 June.
- ▣ Runs from 27 June to 24 October.
- ▶ Runs until 05 September.
- ◆ Runs until 10 September.
- ◀ Runs until 11 September.
- ⊕ Runs from 12 September.
- ▣ Runs until 12 September.
- ▷ Runs from 13 September.
- Runs from 18 September.
- ★ Runs from 19 September.
- Runs from 31 October.

Carlisle/Windermere - Preston - Manchester

Monday to Friday

		AWC EUS	TP	TP LIV	AWC EUS	AWC EUS		TP	AWC EUS	AWC EUS
Carlisle	d	-	-	-	0543	-	-	0622	0647	0702
Penrith for North Lakes		-	-	-	0558	-	-	0639	0701	0717
Windermere	d	-	-	-		-	0642			
Staveley		-	-	-		-	0647			
Burneside		-	-	-		-	0652			
Kendal		-	-	-		-	0656			
Oxenholme Lake District	a	-	-	-	0620	-	0701	0702	0723	0739
Oxenholme Lake District	d	-	-	0626	0621	-	-	0708	0725	0740
Lancaster	a	-	-	0641	0635	-	-	0722	0738	0754
Lancaster	d	0513	0628	0645	0636	0658	-	0723	0739	0755
Preston	a	0530	0646	0702	0655	0715	-	0740	0757	0814
Wigan North Western	a	0544	▼	0716	0709	0728	-	▼	0810	0828
Manchester Oxford Rd	a	-	0720	-	-	-	-	0820	-	-
Manchester Piccadilly	a	-	0724	-	-	-	-	0824	-	-
Manchester Airport	a	-	0741	-	-	-	-	0841	-	-

		TP		AWC EUS	AWC EUS		AWC EUS	AWC EUS	TP
Carlisle	d	0735	-	0746	0809	-	0850	0911	0934
Penrith for North Lakes		0750	-	0800	0824	-			0949
Windermere	d		0756			0850			0956
Staveley			0801						1001
Burneside			0806						1006
Kendal			0810			0901			1010
Oxenholme Lake District	a	0813	0815	0822		0906	0923		1012 1015
Oxenholme Lake District	d	0814	-	0823	▼	-	0924	▼	1013 1017
Lancaster	a	0827	-	0838	0857	-	0938	0956	1027 1032
Lancaster	d	0828	-	0839	0858	-	0939	0957	1028 1032
Preston	a	0846	-	0957	0916	-	0958	1015	1045 1052
Wigan North Western	a	▼	-	0910	0929	-	1010	1028	▼ 1116
Manchester Oxford Rd	a	0920	-	-	-	-	-	-	1120 1153
Manchester Piccadilly	a	0924	-	-	-	-	-	-	1124 1157
Manchester Airport	a	0941	-	-	-	-	-	-	1141 1217

Times shown in this guide are correct at the time of issue, however, Avanti West Coast and TransPennine Express services may be subject to change. Please check before travelling.

Notes

All services operate by Northern.

AWC Run by Avanti West Coast.

▷ Runs from 13 September.

TP Run by TransPennine Express.

EUS To London Euston.

LIV To Liverpool Lime Street via St. Helens Central.

■ Via Wolverhampton and Birmingham New Street.

Carlisle/Windermere - Preston - Manchester

Monday to Friday

		AWC EUS	AWC EUS	TP	AWC EUS	AWC EUS	TP	AWC EUS
Carlisle	d	0949	1008	1034	-	1049	-	1136 1149
Penrith for North Lakes		1004		1049	-		-	1151
Windermere	d			1057				1147
Staveley				1102				1152
Burneside				1107				1157
Kendal				1111				1201
Oxenholme Lake District	a		1042	1112	1116	1122		1206 1214 1222
Oxenholme Lake District	d		1043	1113	-	1123	-	1215 1223
Lancaster	a	1037	1056	1127	-	1137	-	1229 1237
Lancaster	d	1038	1057	1128	-	1138	-	1230 1238
Preston	a	1056	1115	1147	-	1156	-	1247 1257
Wigan North Western	a	1110	1128	-	-	1210	-	1229 1310
Manchester Oxford Rd	a	-	-	-	-	-	-	1319
Manchester Piccadilly	a	-	-	-	-	-	-	1323
Manchester Airport	a	-	-	-	-	-	-	1341

		AWC EUS	AWC EUS	AWC EUS	TP LIV	TP	AWC EUS	AWC EUS
Carlisle	d	1208	1249	-	1312	1328 1335	-	1349 1408
Penrith for North Lakes			1303	-		1343 1349	-	1422
Windermere	d			1307				1358
Staveley				1312				1403
Burneside				1317				1408
Kendal				1321				1412
Oxenholme Lake District	a	1241		1326		1406 1412 1417		1422
Oxenholme Lake District	d	1243		1328		1407 1413	-	1424
Lancaster	a	1256	1337	1343	1357	1422 1427	-	1437 1456
Lancaster	d	1257	1338	1348	1358	1423 1428	-	1439 1457
Preston	a	1315	1359	1406	1416	1441 1445	-	1459 1515
Wigan North Western	a	1328	1410	1424	1428	1456	▼	1510 1528
Manchester Oxford Rd	a	-	-	1453	-	-	-	1519
Manchester Piccadilly	a	-	-	1457	-	-	-	1524
Manchester Airport	a	-	-	1517	-	-	-	1541

Times shown in this guide are correct at the time of issue, however, Avanti West Coast and TransPennine Express services may be subject to change. Please check before travelling.

Notes

- AWC Run by Avanti West Coast.
- TP Run by TransPennine Express.
- BHM Birmingham New Street.
- EUS To London Euston.
- LIV To Liverpool Lime Street via St. Helens Central.
- Via Wolverhampton and Birmingham New Street.

All services operate by Northern.

▶ Runs from 13 September.

Carlisle/Windermere - Preston - Manchester

Monday to Friday

		AWC EUS	AWC EUS	TP	AWC EUS	AWC EUS	AWC EUS
Carlisle	d	-	1449	1511	1538 1549	-	1608 1649
Penrith for North Lakes		-		1554		-	1621 1703
Windermere	d	1459					1600 1708
Staveley		1504					1605 1713
Burneside		1509					1610 1718
Kendal		1513					1614 1722
Oxenholme Lake District	a	1518	1522	1544	1622	1619	1627 1727
Oxenholme Lake District	d	-	1524	1545	1624	1627	1627
Lancaster	a	-	1537		1629	1637	1643 1657 1736
Lancaster	d	-	1539		1630	1638	1643 1658 1737
Preston	a	-	1557	1614	1648	1656	1703 1715 1756
Wigan North Western	a	-	1610	1628	▼	1710	1724 1728 1809
Manchester Oxford Rd	a	-	-	-	1720	-	1754
Manchester Piccadilly	a	-	-	-	1727	-	1758
Manchester Airport	a	-	-	-	1746	-	1818

		AWC EUS	TP	AWC EUS	AWC EUS	TP	AWC EUS	AWC BHM
Carlisle	d	1711	1734	-	1752 1810	1833	-	1846 1857
Penrith for North Lakes			1749	-	1806	1848	-	1901
Windermere	d			1805				1856
Staveley				1810				1901
Burneside				1815				1906
Kendal				1819				1910
Oxenholme Lake District	a	1744	1812	1824	1829 1843	1911 1915	1923 1933	1933
Oxenholme Lake District	d	1745	1813	-	1830 1844	1912 1917	1925 1934	1934
Lancaster	a		1827	-	1843 1858	1928 1933	1938 1947	1947
Lancaster	d		1828	-	1844 1859	1929 1934	1939 1948	1948
Preston	a	1814	1846	-	1903 1917	1945 1953	1957 2006	2006
Wigan North Western	a	1828	▼	-	1916 1918	▼	2027 2011 2020	2020
Manchester Oxford Rd	a	-	1922	-	-	2020	2054	-
Manchester Piccadilly	a	-	1926	-	-	2024	2058	-
Manchester Airport	a	-	1946	-	-	2041	2120	-

Times shown in this guide are correct at the time of issue, however, Avanti West Coast and TransPennine Express services may be subject to change. Please check before travelling.

Notes

- AWC Run by Avanti West Coast.
- TP Run by TransPennine Express.
- BHM Birmingham New Street.
- EUS To London Euston.
- Via Wolverhampton and Birmingham New Street.

All services operate by Northern.

▶ Runs from 13 September.

Carlisle/Windermere - Preston - Manchester

Monday to Friday

		TP	AWC	AWC	AWC	TP				
			EUS	EUS	BHM	CRE				
Carlisle	d	-	-	1935	1949	2007	2007	2126	2135	-
Penrith for North Lakes		-	-	1949				2140		
Windermere	d	1948	2147							2247
Staveley		1953	2152							2252
Burneside		1958	2157							2257
Kendal		2002	2201							2301
Oxenholme Lake District	a	2007	2206	2012	2022	2040	2041	2203	2210	2306
Oxenholme Lake District	d	-	-	2013	2024	2041	2042	2204	2211	2308
Lancaster	a	-	-	2027	2037	2056	2055	2218	2225	2323
Lancaster	d	-	-	2029	2038	2056	2056	2219	2226	2324
Preston	a	-	-	2046	2056	2114	2114	2237	2244	2343
Wigan North Western	a	-	-	▼	2110	2128	2128	2252	▼	-
Manchester Oxford Rd	a	-	-	2120	-	-	-	-	2320	-
Manchester Piccadilly	a	-	-	2124	-	-	-	-	2324	-
Manchester Airport	a	-	-	2141	-	-	-	-	2344	-

Carlisle/Windermere - Preston - Manchester

Saturday

		TP	AWC	TP	AWC	TP	AWC	AWC	TP	AWC	AWC
		LIV	EUS	LIV	EUS		EUS			EUS	EUS
Carlisle	d	-	-	0544	-	-	0621	-	-	0647	0649
Penrith for North Lakes		-	-	0558	-	-	0639	-	-	0701	
Windermere	d	-	-					0642			
Staveley		-	-					0647			
Burneside		-	-					0652			
Kendal		-	-					0656			
Oxenholme Lake District	a	-	-	0620	-	-	0702	0701		0723	0722
Oxenholme Lake District	d	-	-	0621	0627	-	0708	-		0725	0724
Lancaster	a	-	-	0635	0642	-	0722	-		0738	0737
Lancaster	d	0535	0627	0636	0643	0658	0723	-		0739	0738
Preston	a	0655	0647	0653	0702	0715	0740	-		0757	0756
Wigan North Western	a	0609	▼	0708	0717	0728	▼			0811	0810
Manchester Oxford Rd	a	-	0720	-	-	-	-	0820	-	-	-
Manchester Piccadilly	a	-	0725	-	-	-	-	0824	-	-	-
Manchester Airport	a	-	0743	-	-	-	-	0841	-	-	-

		AWC	TP	AWC	AWC	AWC	AWC	TP		
		EUS		EUS	EUS	EUS	EUS			
Carlisle	d	0702	0735	-	0747	0807	-	0849	0912	0933
Penrith for North Lakes		0717	0750	-	0801	0822	-		0717	0948
Windermere	d			0756			0850			
Staveley				0801						
Burneside				0806						
Kendal				0810			0901			
Oxenholme Lake District	a	0704	0813	0815	0823		0906	0922		1011
Oxenholme Lake District	d	0741	0814	-	0824	▼	-	0923	▼	1012
Lancaster	a	0755	0827	-	0838	0855	-	0937	0958	1026
Lancaster	d	0756	0828	-	0839	0856	-	0938	0959	1027
Preston	a	0814	0846	-	0857	0915	-	0957	1017	1044
Wigan North Western	a	0828	▼	-	0910	0928	-	1010	1028	▼
Manchester Oxford Rd	a	-	0920	-	-	-	-	-	-	1120
Manchester Piccadilly	a	-	0924	-	-	-	-	-	-	1124
Manchester Airport	a	-	0941	-	-	-	-	-	-	1141

Times shown in this guide are correct at the time of issue, however, Avanti West Coast and TransPennine Express services may be subject to change. Please check before travelling.

Times shown in this guide are correct at the time of issue, however, Avanti West Coast and TransPennine Express services may be subject to change. Please check before travelling.

Notes

- AWC Run by Avanti West Coast. ◆ Runs until 10 September.
- TP Run by TransPennine Express. ▶ Runs from 13 September.
- CRE To Crewe.
- BHM Birmingham New Street.
- EUS To London Euston.
- Via Wolverhampton and Birmingham New Street.

Notes

- AWC Run by Avanti West Coast. ◀ Runs until 11 September.
- TP Run by TransPennine Express. ● Runs from 18 September.
- EUS To London Euston.
- Rail replacement bus service.
- Via Wolverhampton and Birmingham New Street.

Carlisle/Windermere - Preston - Manchester

Saturday

		AWC EUS	AWC EUS	TP	AWC EUS	AWC EUS	TP
Carlisle	d	0949	-	1008	1037	-	1050
Penrith for North Lakes		1003	-	1051	-	-	1151
Windermere	d	1008	-	1057	-	-	1147
Staveley		1013	-	1102	-	-	1152
Burneside		1018	-	1107	-	-	1157
Kendal		1022	-	1111	-	-	1201
Oxenholme Lake District	a	1027	1041	1114	1116	1123	1206 1214
Oxenholme Lake District	d	1029	1042	1115	-	1124	- 1215
Lancaster	a	1037	1047	1056	1129	-	1138 - 1229
Lancaster	d	1038	1048	1057	1130	-	1139 - 1230
Preston	a	1056	1106	1116	1148	-	1158 1214 - 1247
Wigan North Western	a	1110	1123	1117	-	-	1210 1228 - 1319
Manchester Oxford Rd	a	-	-	-	-	-	- 1319
Manchester Piccadilly	a	-	1157	-	-	-	- 1323
Manchester Airport	a	-	1217	-	-	-	- 1341

		AWC EUS	AWC EUS	AWC EUS	AWC EUS	TP LIV	TP	TP EUS
Carlisle	d	1149	1207	1248	-	1314	1328	- 1335 1349
Penrith for North Lakes		1302	-	1343	-	1350	-	1350
Windermere	d	1307	-	1312	-	1358	-	1403
Staveley		1312	-	1317	-	1408	-	1412
Burneside		1317	-	1321	-	1412	-	1422
Kendal		1321	-	1326	-	1406 1417	1413	1422
Oxenholme Lake District	a	1222	1241	1326	-	1406 1417	1413	1422
Oxenholme Lake District	d	1223	1243	1327	-	1407	-	1413 1424
Lancaster	a	1237	1256	1336	1342	1359	1421	- 1427 1437
Lancaster	d	1238	1257	1337	1348	1400	1422	- 1428 1439
Preston	a	1256	1316	1356	1406	1417	1440	- 1445 1456
Wigan North Western	a	1310	1328	1410	1423	1431	1456	- 1510
Manchester Oxford Rd	a	-	-	-	1453	-	-	- 1519
Manchester Piccadilly	a	-	-	-	1457	-	-	- 1524
Manchester Airport	a	-	-	-	1517	-	-	- 1541

Times shown in this guide are correct at the time of issue, however, Avanti West Coast and TransPennine Express services may be subject to change. Please check before travelling.

Notes All services operate by Northern.

AWC Run by Avanti West Coast.

● Runs from 18 September.

TP Run by TransPennine Express.

EUS To London Euston.

☐ Rail replacement bus service.

■ Via Wolverhampton and Birmingham New Street.

Carlisle/Windermere - Preston - Manchester

Saturday

		AWC EUS	AWC EUS	AWC EUS	TP	AWC EUS	AWC EUS
Carlisle	d	1408	-	1449	1511	1536	1549
Penrith for North Lakes		1422	-	1551	-	-	1608
Windermere	d	1459	-	1551	-	-	1600
Staveley		1504	-	1605	-	-	1713
Burneside		1509	-	1610	-	-	1718
Kendal		1513	-	1614	-	-	1722
Oxenholme Lake District	a	1518	1522	1544	1622	1619	1727
Oxenholme Lake District	d	1523	1545	1624	1624	1627	-
Lancaster	a	1455	-	1537	1627	1637	1643 1656
Lancaster	d	1456	-	1538	1628	1638	1647 1658
Preston	a	1516	-	1536	1616	1645	1656 1705 1716
Wigan North Western	a	1529	-	1610	1628	1710	1722 1728
Manchester Oxford Rd	a	-	-	-	1720	-	1753
Manchester Piccadilly	a	-	-	-	1724	-	1757
Manchester Airport	a	-	-	-	1741	-	1817

		AWC EUS	AWC EUS	AWC EUS	TP	AWC EUS	AWC EUS	TP
Carlisle	d	1649	1649	1711	1734	-	1752 1809	1833 -
Penrith for North Lakes		1703	-	1749	-	-	1809	1848 -
Windermere	d	1802	-	1807	-	1802	-	1857
Staveley		1807	-	1812	-	1816	-	1902
Burneside		1812	-	1816	-	1816	-	1907
Kendal		1816	-	1821	-	1825 1844	1911	1916
Oxenholme Lake District	a	1722	1745	1812	1821	1825	1844	1911 1916
Oxenholme Lake District	d	1724	1746	1813	-	1826	1845	1912 1918
Lancaster	a	1737	1737	1828	-	1840	1859	1926 1933
Lancaster	d	1738	1738	1829	-	1841	1900	1927 1935
Preston	a	1756	1756	1815	1848	-	1900	1917 1945 1956
Wigan North Western	a	1810	1810	1828	1913	1931	1931	2023
Manchester Oxford Rd	a	-	-	-	1920	-	-	2020 2054
Manchester Piccadilly	a	-	-	-	1924	-	-	2024 2058
Manchester Airport	a	-	-	-	1942	-	-	2048 2119

Times shown in this guide are correct at the time of issue, however, Avanti West Coast and TransPennine Express services may be subject to change. Please check before travelling.

Notes All services operate by Northern.

AWC Run by Avanti West Coast.

◀ Runs until 11 September.

TP Run by TransPennine Express.

● Runs from 18 September.

EUS To London Euston.

BHM To Birmingham New Street.

☐ Rail replacement bus service.

■ Via Wolverhampton and Birmingham New Street.

Carlisle/Windermere - Preston - Manchester

Saturday

		AWC EUS	AWC BHM	TP	AWC BHM	AWC BHM	★	◇	◇	
Carlisle	d	1853	1912	-	1934	1949	2009	-	-	-
Penrith for North Lakes		1907	-	-	1949	2003	2023	-	-	-
Windermere	d			1948				2042	2042	2140
Staveley				1953				2047	2047	2145
Burneside				1958				2052	2052	2150
Kendal				2002				2056	2056	2154
Oxenholme Lake District	a	1929		2007	2012	2025	2045	2101	2101	2159
Oxenholme Lake District	d	1930		-	2013	2026	2047	-	2103	-
Lancaster	a	1944	1957	-	2027	2040	2100	-	2121	-
Lancaster	d	1945	1958	-	2028	2041	2102	-	-	-
Preston	a	2003	2016	-	2045	2059	2119	-	-	-
Wigan North Western	a	2017	2030	-	▼	2113	2133	-	-	-
Manchester Oxford Rd	a	-	-	-	2119	-	-	-	-	-
Manchester Piccadilly	a	-	-	-	2124	-	-	-	-	-
Manchester Airport	a	-	-	-	2142	-	-	-	-	-

		★	★	◇
Carlisle	d	-	-	-
Penrith for North Lakes		-	-	-
Windermere	d	2140	2225	2229
Staveley		2150	2235	2234
Burneside		2200	2245	2239
Kendal		2210	2255	2243
Oxenholme Lake District	a	2225	2310	2248
Oxenholme Lake District	d	-	2310	2250
Lancaster	a	-	2355	2305
Lancaster	d	-	2355	2305
Preston	a	-	0035	2324
Wigan North Western	a	-	-	-
Manchester Oxford Rd	a	-	-	-
Manchester Piccadilly	a	-	-	-
Manchester Airport	a	-	-	-

Times shown in this guide are correct at the time of issue, however, Avanti West Coast and TransPennine Express services may be subject to change. Please check before travelling.

Notes

- AWC Run by Avanti West Coast.
- TP Run by TransPennine Express.
- BHM To Birmingham New Street.
- Bus Rail replacement bus service.
- Via Wolverhampton and Birmingham New Street.
- Runs from 18 September.
- Runs until 19 June.
- Runs from 26 June.

Carlisle/Windermere - Preston - Manchester

Sunday

		●	◆	AWC EUS	AWC EUS	TP	AWC EUS
Carlisle	d	-	-	-	1051	-	1135
Penrith for North Lakes		-	-	-	1105	-	1149
Windermere	d	-	1030	1053	-	1139	1224
Staveley		-	1040	1058	-	1144	1224
Burneside		-	1050	1103	-	1149	1236
Kendal		-	1100	1107	-	1153	1236
Oxenholme Lake District	a	-	1115	1112	1127	1158	1212
Oxenholme Lake District	d	-	-	-	1128	-	1213
Lancaster	a	-	-	-	1142	-	1227
Lancaster	d	-	-	-	1143	1158	1228
Preston	a	0912	-	-	1201	1215	1245
Wigan North Western	a	0926	-	-	1215	1229	1317
Manchester Oxford Rd	a	0956	-	-	-	-	1321
Manchester Piccadilly	a	1000	-	-	-	-	1325
Manchester Airport	a	1024	-	-	-	-	1342

		AWC EUS	TP	AWC EUS	AWC EUS	TP	AWC EUS	AWC EUS
Carlisle	d	1207	1233	1249	-	1310	1334	1407
Penrith for North Lakes			1248		-		1348	1422
Windermere	d				1308		1359	
Staveley					1313		1404	
Burneside					1318		1409	
Kendal					1322		1413	
Oxenholme Lake District	a	1242	1311	1322	1327		1411	1418
Oxenholme Lake District	d	1243	1312	1323	1329		1412	1423
Lancaster	a	1256	1326	1337	1344	1357	1426	1437
Lancaster	d	1257	1327	1338	1349	1358	1427	1438
Preston	a	1315	1344	1356	1407	1416	1445	1456
Wigan North Western	a	1329	▼	1410	1423	1429	▼	1510
Manchester Oxford Rd	a	-	1422	-	1452	-	1520	-
Manchester Piccadilly	a	-	1426	-	1456	-	1524	-
Manchester Airport	a	-	1443	-	1518	-	1542	-

Times shown in this guide are correct at the time of issue, however, Avanti West Coast and TransPennine Express services may be subject to change. Please check before travelling.

Notes

- AWC Run by Avanti West Coast.
- TP Run by TransPennine Express.
- EUS To London Euston.
- Bus Rail replacement bus service.
- Via Wolverhampton and Birmingham New Street.
- Runs until 20 June.
- Runs from 27 June.
- Runs from 12 September.

Carlisle/Windermere - Preston - Manchester

Sunday

		AWC EUS	AWC EUS	TP LIV	TP	AWC EUS	AWC EUS			
Carlisle	d	-	1449	1510	1523	1534	-	1549	1607	-
Penrith for North Lakes		-			1537	1548	-		1622	-
Windermere	d	1446					1554			1659
Staveley		1451					1559			1704
Burneside		1456					1604			1709
Kendal		1500					1608			1713
Oxenholme Lake District	a	1505	1522	1543	1600	1611	1613	1622		1718
Oxenholme Lake District	d	-	1523	1544	1601	1612	1615	1623		-
Lancaster	a	-	1537	1559	1615	1626	1631	1637	1656	-
Lancaster	d	-	1538	1600	1616	1627	1648	1638	1657	-
Preston	a	-	1556	1617	1634	1644	1706	1656	1716	-
Wigan North Western	a	-	1610	1631	1649	1723	1710	1730	-	-
Manchester Oxford Rd	a	-	-	-	-	1720	1751	-	-	-
Manchester Piccadilly	a	-	-	-	-	1724	1755	-	-	-
Manchester Airport	a	-	-	-	-	1742	1818	-	-	-

		AWC EUS	AWC EUS	AWC EUS	AWC EUS	TP	AWC EUS	AWC BHM		
Carlisle	d	1607	1649	1649	1710	1736	-	1751	1807	-
Penrith for North Lakes		1622		1703		1750	-	1805		-
Windermere	d						1800			1901
Staveley							1805			1907
Burneside							1810			1912
Kendal							1814			1916
Oxenholme Lake District	a		1722		1745	1813	1819	1827	1841	1921
Oxenholme Lake District	d		1724		1746	1814	-	1828	1842	1922
Lancaster	a	1656	1737	1737		1828	-	1842	1856	1937
Lancaster	d	1657	1738	1738		1829	-	1843	1857	1939
Preston	a	1716	1756	1756	1815	1846	-	1901	1915	1958
Wigan North Western	a	1730	1810	1810	1828		-	1915	1929	2023
Manchester Oxford Rd	a	-	-	-	-	1921	-	-	-	2052
Manchester Piccadilly	a	-	-	-	-	1925	-	-	-	2056
Manchester Airport	a	-	-	-	-	1942	-	-	-	2117

Times shown in this guide are correct at the time of issue, however, Avanti West Coast and TransPennine Express services may be subject to change. Please check before travelling.

Notes

- AWC Run by Avanti West Coast. ▶ Runs until 05 September.
- TP Run by TransPennine Express. * Runs from 12 September.
- EUS To London Euston.
- BHM To Birmingham New Street via Wolverhampton
- LIV To Liverpool Lime Street via St. Helens Central.
- Via Wolverhampton and Birmingham New Street.

Carlisle/Windermere - Preston - Manchester

Sunday

		AWC EUS	TP	AWC EUS	AWC BHM	AW BHM		AWC CRE		
Carlisle	d	1851	1936	-	1947	2004	2007	-	2125	
Penrith for North Lakes		1906	1950	-	2019	2022		-	2140	
Windermere	d			1957				2047	2139	
Staveley				2002				2052	2144	
Burneside				2007				2057	2149	
Kendal				2011				2101	2153	
Oxenholme Lake District	a	1928	2013	2016	2022	2042		2106	2158	2203
Oxenholme Lake District	d	1929	2014	-	2023	2043		-	2200	2204
Lancaster	a	1943	2028	-	2036	2056	2056	-	-	2219
Lancaster	d	1944	2029	-	2037	2057	2057	-	2220	2220
Preston	a	2002	2046	-	2055	2115	2115	-	2232	2238
Wigan North Western	a	2016	2046	-	2108	2129	2129	-	-	2252
Manchester Oxford Rd	a	-	2120	-	-	-	-	-	-	-
Manchester Piccadilly	a	-	2123	-	-	-	-	-	-	-
Manchester Airport	a	-	2140	-	-	-	-	-	-	-

		TP
Carlisle	d	-
Penrith for North Lakes		2137
Windermere	d	2147
Staveley		2152
Burneside		2157
Kendal		2201
Oxenholme Lake District	a	2206
Oxenholme Lake District	d	2215
Lancaster	a	2232
Lancaster	d	2232
Preston	a	2251
Wigan North Western	a	-
Manchester Oxford Rd	a	-
Manchester Piccadilly	a	-
Manchester Airport	a	-

Times shown in this guide are correct at the time of issue, however, Avanti West Coast and TransPennine Express services may be subject to change. Please check before travelling.

Notes

- AWC Run by Avanti West Coast. ● Runs until 20 June.
- TP Run by TransPennine Express. ◆ Runs from 27 June.
- EUS To London Euston. ▶ Runs until 05 September.
- BHM To Birmingham New Street via Wolverhampton * Runs from 12 September.
- CRE To Crewe.
- Via Wolverhampton and Birmingham New Street.

Manchester - Preston - Windermere/Carlisle

Monday to Friday

	TP	AWC	TP	AWC	AWC	AWC
	GLC	GLC	EDB	EDB	GLC	GLC
		13				▶
Manchester Airport ← d	-	-	-	0610	-	-
Manchester Piccadilly ⇄ d	0457	-	-	0626	-	-
Manchester Oxford Rd d	↓	-	-	0629	-	-
Wigan North Western d	-	0625	-	▼ 0738	-	0800 0839
Preston d	0536	-	0641	-	0704 0753	- 0815 0853
Lancaster a	0550	-	0654	-	0719 0807	- 0829 0907
Lancaster d	0551 0600	0655	-	0720 0808	-	0830 0908
Oxenholme Lake District a	0604 0614	0708	-	0732 0821	-	0842
Oxenholme Lake District d	0605	0616 0711	0729	0733 0822	0827	0843
Kendal		0621	0733		0831	
Burneside		0625	0737		0835	
Staveley		0630	0742		0840	
Windermere ☁ a	↓	0636	↓	0748	↓	0846
Penrith for North Lakes d	0630	-	0735	-	0758	▼ 0945
Carlisle a	0645	-	0750	-	0814 0900	- 0921 1001

	TP	TP	AWC	AWC	AWC	AWC	AWC
	GLC	EDB	GLC	EDB	GLC	GLC	GLC
					▶	▶	▶
Manchester Airport ← d	-	0810	-	-	0827	-	-
Manchester Piccadilly ⇄ d	-	0827	-	-	0848	-	-
Manchester Oxford Rd d	-	0830	-	-	0851	-	-
Wigan North Western d	0844	▼	-	0925 0921 0938	1026	1026	1038
Preston d	0900 0904	-	0941 0944 0953	1042	1042	1054	
Lancaster a	0919	-	0954 1001 1008	1056	1056	1108	
Lancaster d	0920	-	0955 1002 1009	1057	1057	1110	
Oxenholme Lake District a	0932	-	1020 1021	1108	1108		
Oxenholme Lake District d	0933 0930		1021 1022	1109	1109		
Kendal		0934	1026				
Burneside		0938	1029				
Staveley		0943	1034				
Windermere ☁ a	↓	0949	↓	1041	↓	↓	
Penrith for North Lakes d	0950	↓	-	1031	-	▼ 1135	
Carlisle a	1006 1012	-	1047	-	1059	1147 1201	

Times shown in this guide are correct at the time of issue, however, Avanti West Coast and TransPennine Express services may be subject to change. Please check before travelling.

Notes	All services operate by Northern.
AWC Run by Avanti West Coast.	▶ Runs until 10 September.
TP Run by TransPennine Express.	▶ Runs from 13 September.
GLC To Glasgow Central	
EDB To Edinburgh Waverley	

Manchester - Preston - Windermere/Carlisle

Monday to Friday

	TP	AWC	AWC	TP	AWC	AWC
	EDB	GLC	EDB	GLC	GLC	GLC
					▶	▶
Manchester Airport ← d	-	1010	-	-	-	- 1128
Manchester Piccadilly ⇄ d	-	1026	-	-	-	- 1147
Manchester Oxford Rd d	-	1030	-	-	-	- 1150
Wigan North Western d	-	▼ 1125	1138	-	-	1225 1225 1221
Preston d	-	1104	1141 1153	-	1202	1241 1241 1245
Lancaster a	-	1154	1207	-	1217	1255 1255 1302
Lancaster d	-	1155	1208	-	1218	1257 1257 1302
Oxenholme Lake District a	-		1220	-	1231	1309
Oxenholme Lake District d	1121		1222 1239 1323	1310		1332
Kendal	1125		1243			1337
Burneside	1129		1247			1340
Staveley	1134		1252			1345
Windermere ☁ a	1140	↓	1258	↓	↓	1351
Penrith for North Lakes d	-	↓	1231	↓	-	1257 1335 1331 -
Carlisle a	-	1205 1247 1300	-	1313	1351	1347 -

	AWC	TP	AWC	AWC	AWC	AWC	TP
	GLC	EDB	GLC	EDB	GLC	GLC	EDB
	▶				▶	▶	
Manchester Airport ← d	-	1210	-	-	-	-	- 1410
Manchester Piccadilly ⇄ d	-	1226	-	-	-	-	- 1426
Manchester Oxford Rd d	-	1230	-	-	-	-	- 1430
Wigan North Western d	1238	▼	1325 1338	-	1425	1425	1438 ▼
Preston d	1253	1306	1341 1353	-	1441	1441	1453 1504
Lancaster a	1307	1320	1354 1407	-	1454	1454	1508 1519
Lancaster d	1308	1321	1355 1408	-	1456	1456	1510 1520
Oxenholme Lake District a	1321	1334	1408	-	1509		1523 1532
Oxenholme Lake District d	1323	1335	1409		1439	1510	1524 1533
Kendal				1443			
Burneside				↓			
Staveley				↓			
Windermere ☁ a				↓	1455	↓	↓
Penrith for North Lakes d	↓	↓	↓	1444	-	1535	1531 ↓ 1559
Carlisle a	1400	1412 1447 1549	-	1550	1546	1603	1616

Times shown in this guide are correct at the time of issue, however, Avanti West Coast and TransPennine Express services may be subject to change. Please check before travelling.

Notes	All services operate by Northern.
AWC Run by Avanti West Coast.	▶ Runs until 10 September.
TP Run by TransPennine Express.	▶ Runs from 13 September.
GLC To Glasgow Central	
EDB To Edinburgh Waverley	

Manchester - Preston - Windermere/Carlisle

Monday to Friday

		AWC GLC	AWC EDB	AWC GLC	AWC GLC	TP GLC	TP GLC		
Manchester Airport	d	-	-	1428	-	-	-	1610	-
Manchester Piccadilly	d	-	-	1447	-	-	-	1626	-
Manchester Oxford Rd	d	-	-	1450	-	-	-	1630	-
Wigan North Western	d	-	1525	1521	1538	1625	1638	1644	▼
Preston	d	-	1541	1546	1552	1641	1653	1702	1706
Lancaster	a	-	1603	1607	1655	1708	1717	1722	-
Lancaster	d	-	▼	1603	1608	1656	1709	1718	1723
Oxenholme Lake District	a	-	1605	1630		1710	1722		1735
Oxenholme Lake District	d	1537	1607	1631		1711	1723		1736
Kendal		1541		1636					1746
Burneside		1545		1639					1750
Staveley		1550		1644					1755
Windermere	a	1556	▼	1651	▼	▼	▼	▼	1801
Penrith for North Lakes		-	1632	-	1645	1737	1749	1755	▼
Carlisle	a	-	1647	-	1700	1725	1805	1812	1814

		AWC GLC	AWC EDB	TP GLC	AWC GLC	TP EDB	AWC GLC	AWC GLC
Manchester Airport	d	-	-	-	1710	-	1727	1810
Manchester Piccadilly	d	-	-	-	1727	-	1747	1826
Manchester Oxford Rd	d	-	-	-	1730	-	1751	1830
Wigan North Western	d	1725	1738	-	▼	1825	1820	▼
Preston	d	1741	1753	-	1805	1839	1845	1906
Lancaster	a	1754	1808	-	1819	1855	1902	1921
Lancaster	d	1755	1809	-	1820	1857	1902	1922
Oxenholme Lake District	a	1808	1822	-	1833		1920	1934
Oxenholme Lake District	d	1809	1824	1829	1834		1922	1935
Kendal					1833			1926
Burneside					1837			1930
Staveley					1842			1935
Windermere	a		▼	1848	▼	▼	1942	▼
Penrith for North Lakes		▼	1848	-	1859	1931	-	2001
Carlisle	a	1846	1904	-	1915	1946	-	2016

Times shown in this guide are correct at the time of issue, however, Avanti West Coast and TransPennine Express services may be subject to change. Please check before travelling.

Notes

AWC Run by Avanti West Coast.
 TP Run by TransPennine Express.
 GLC To Glasgow Central
 EDB To Edinburgh Waverley

Runs from 13 September.

Manchester - Preston - Windermere/Carlisle

Monday to Friday

		AWC EDB	AWC GLC	AWC GLC	AWC GLC		
Manchester Airport	d	-	-	-	-	-	-
Manchester Piccadilly	d	-	-	-	-	-	-
Manchester Oxford Rd	d	-	-	-	-	-	-
Wigan North Western	d	1940	2025	-	2038	2127	-
Preston	d	1955	2041	-	2053	2143	-
Lancaster	a	2010	2054	-	2107	2155	-
Lancaster	d	2012	2055	-	2108	2158	-
Oxenholme Lake District	a		2108	-	2122	2210	-
Oxenholme Lake District	d		2110	2120	2124	2211	2222
Kendal					2124		2226
Burneside					2128		2230
Staveley					2133		2235
Windermere	a	▼	▼		2139	▼	2241
Penrith for North Lakes		2050	2135	-	▼	2236	-
Carlisle	a	2105	2150	-	2201	2251	-

Times shown in this guide are correct at the time of issue, however, Avanti West Coast and TransPennine Express services may be subject to change. Please check before travelling.

Notes

AWC Run by Avanti West Coast.
 TP Run by TransPennine Express.
 GLC To Glasgow Central
 EDB To Edinburgh Waverley

All services operate by Northern.

Manchester - Preston - Windermere/Carlisle

Saturday

	TP	AWC	TP	AWC	AWC			
	GLC	GLC	EDB	EDB	GLC			
Manchester Airport ← d	-	-	-	0610	-	-	-	-
Manchester Piccadilly ⇄ d	0500	-	-	0626	-	-	-	-
Manchester Oxford Rd d	↓	-	-	0629	-	-	-	-
Wigan North Western d	-	0625	-	▼ 0738	-	0823	-	-
Preston d	0535	-	0641	-	0704	0753	-	0838
Lancaster a	0550	-	0654	-	0719	0807	-	0852
Lancaster d	0551	0600	0655	-	0720	0808	-	0853
Oxenholme Lake District a	0604	0614	0708	-	0732	0821	-	0905
Oxenholme Lake District d	0605	0616	0709	0729	0733	0822	0827	0906 0920
Kendal	↓	0621	↓	0733	↓	0831	↓	0924
Burneside	↓	0625	↓	0737	↓	0835	↓	0928
Staveley	↓	0630	↓	0742	↓	0840	↓	0933
Windermere ☁ a	↓	0636	↓	0748	↓	0846	↓	0939
Penrith for North Lakes d	0631	-	0735	-	0758	▼	-	0932
Carlisle a	0646	-	0750	-	0813	0900	-	0947

	AWC	TP	TP	AWC	AWC	AWC	AWC	
	GLC	GLC	EDB	GLC	GLC	GLC	EDB	
Manchester Airport ← d	●	-	0810	0828	-	-	-	-
Manchester Piccadilly ⇄ d	-	-	0827	0848	-	-	-	-
Manchester Oxford Rd d	-	-	0830	0851	-	-	-	-
Wigan North Western d	0838	0843	▼	0921	0925	1025	1025	1038
Preston d	0853	0900	0904	0945	0941	1041	1041	1053
Lancaster a	0908	0919	1002	0955	1054	1054	1110	-
Lancaster d	0909	0920	1003	0956	1055	1055	1111	-
Oxenholme Lake District a	0921	0932	1032	1108	1108			-
Oxenholme Lake District d	0922	0933	1033	1109	1109			1121
Kendal	↓	↓	↓	1038	↓	↓	↓	1125
Burneside	↓	↓	↓	↓	↓	↓	↓	1129
Staveley	↓	↓	↓	↓	↓	↓	↓	1134
Windermere ☁ a	↓	↓	↓	1051	↓	↓	↓	1140
Penrith for North Lakes d	0947	0953	▼	-	1032	1135	▼	1146
Carlisle a	1002	1007	1011	-	1047	1150	1147	1201

Times shown in this guide are correct at the time of issue, however, Avanti West Coast and TransPennine Express services may be subject to change. Please check before travelling.

Notes	All services operate by Northern.
AWC Run by Avanti West Coast.	◀ Runs until 11 September.
TP Run by TransPennine Express.	● Runs from 18 September.
GLC To Glasgow Central	
EDB To Edinburgh Waverley	

Manchester - Preston - Windermere/Carlisle

Saturday

	TP	AWC	AWC	TP	AWC	AWC	TP	
	EDB	GLC	EDB	GLC	GLC	GLC	EDB	
Manchester Airport ← d	1010	-	-	-	-	-	1128	- 1210
Manchester Piccadilly ⇄ d	1026	-	-	-	-	-	1147	- 1226
Manchester Oxford Rd d	1030	-	-	-	-	-	1150	- 1230
Wigan North Western d	▼	1125	1138	-	-	1223	1216	1238 ▼
Preston d	1103	1141	1153	1201	-	1241	1245	1253 1306
Lancaster a	1154	1207	1216	-	-	1254	1303	1307 1321
Lancaster d	1155	1209	1217	-	-	1255	1313	1308 1322
Oxenholme Lake District a			1221	1230	-	1308	1331	1321 1334
Oxenholme Lake District d			1223	1231	1239	1309	1332	1323 1335
Kendal	↓	↓	↓	↓	↓	1243	↓	1337
Burneside	↓	↓	↓	↓	↓	1247	↓	1340
Staveley	↓	↓	↓	↓	↓	1252	↓	1345
Windermere ☁ a	↓	↓	↓	↓	↓	1258	↓	1352
Penrith for North Lakes d	▼	1231	▼	1256	-	▼	-	▼
Carlisle a	1205	1247	1300	1312	-	1347	-	1400 1414

	AWC	AWC	AWC	AWC	AWC	TP	AWC	
	GLC	EDB	GLC	GLC	GLC	EDB	GLC	
Manchester Airport ← d	-	-	-	●	◀	●	-	1410 - -
Manchester Piccadilly ⇄ d	-	-	-	-	-	-	-	1426 - -
Manchester Oxford Rd d	-	-	-	-	-	-	-	1430 - -
Wigan North Western d	1325	1338	-	1426	1427	1438	▼	- 1525
Preston d	1341	1353	-	1441	1441	1453	1504	- 1541
Lancaster a	1354	1407	-	1454	1454	1507	1519	- 1554
Lancaster d	1355	1408	-	1456	1456	1510	1520	- 1555
Oxenholme Lake District a	1408	-	-	1509	1521	1532	-	1609
Oxenholme Lake District d	1409	1439	-	1510	1523	1533	1537	1611
Kendal	↓	↓	↓	1443	↓	↓	↓	1541
Burneside	↓	↓	↓	↓	↓	↓	↓	1545
Staveley	↓	↓	↓	↓	↓	↓	↓	1550
Windermere ☁ a	↓	↓	↓	1455	↓	↓	↓	1556
Penrith for North Lakes d	▼	1444	-	1531	1535	▼	1559	- ▼
Carlisle a	1446	1500	-	1546	1550	1602	1613	- 1649

Times shown in this guide are correct at the time of issue, however, Avanti West Coast and TransPennine Express services may be subject to change. Please check before travelling.

Notes	All services operate by Northern.
AWC Run by Avanti West Coast.	◀ Runs until 11 September.
TP Run by TransPennine Express.	● Runs from 18 September.
GLC To Glasgow Central	
EDB To Edinburgh Waverley	

Manchester - Preston - Windermere/Carlisle

Saturday

		AWC EDB	AWC GLC	TP EDB	AWC GLC	AWC EDB	TP GLC			
Manchester Airport	d	1428	-	-	1610	-	-	-	1710	
Manchester Piccadilly	d	1447	-	-	1626	-	-	-	1727	
Manchester Oxford Rd	d	1450	-	-	1630	-	-	-	1730	
Wigan North Western	d	1520	1538	1623	▼	-	1725	1738	-	▼
Preston	d	1545	1553	1641	1708	-	1741	1753	-	1805
Lancaster	a	1602	1608	1655	1722	-	1754	1807	-	1819
Lancaster	d	1603	1610	1656	1723	-	1755	1808	-	1820
Oxenholme Lake District	a	1630			1736	-	1808	1821	-	1833
Oxenholme Lake District	d	1631			1737	1736	1809	1823	1829	1834
Kendal		1636				1740				1833
Burneside		1639				1744				1837
Staveley		1644				1749				1842
Windermere	a	1651	▼	▼		1755	▼	▼		1848
Penrith for North Lakes		-	1645	1731	▼	-	▼	1848	-	1859
Carlisle	a	-	1700	1747	1814	-	1847	1903	-	1915

		AWC GLC	AWC GLC	TP EDB	AWC GLC	★	AWC GLC	◇	★	
Manchester Airport	d	-	1728	-	1810	-	-	-	-	
Manchester Piccadilly	d	-	1748	-	1826	-	-	-	-	
Manchester Oxford Rd	d	-	1751	-	1830	-	-	-	-	
Wigan North Western	d	1825	1820	1838	▼	1926	-	2025	-	
Preston	d	1841	1844	1854	1906	1942	-	2041	-	
Lancaster	a	1854	1902	1908	1904	1955	-	2054	-	
Lancaster	d	1855	1902	1909	1906	1956	-	2055	-	
Oxenholme Lake District	a	1908	1921	1922	1934	2008	-	2108	-	
Oxenholme Lake District	d	1909	1922	1923	1935	2009	2018	2110	2117	2115
Kendal			1927				2022		2121	2125
Burneside			1930				2026		2125	2135
Staveley			1935				2031		2130	2145
Windermere	a	▼	1941	▼	▼		2037	▼	2136	2155
Penrith for North Lakes		1935	-	▼	2001	2035	-	2135	-	-
Carlisle	a	1950	-	2002	2015	2049	-	2150	-	-

Times shown in this guide are correct at the time of issue, however, Avanti West Coast and TransPennine Express services may be subject to change. Please check before travelling.

Notes All services operate by Northern.

- AWC Run by Avanti West Coast.
- TP Run by TransPennine Express.
- GLC To Glasgow Central
- EDB To Edinburgh Waverley

- ★ Runs until 19 June.
- ◇ Runs from 26 June.

Manchester - Preston - Windermere/Carlisle

Saturday

		◇	★
Manchester Airport	d	-	-
Manchester Piccadilly	d	-	-
Manchester Oxford Rd	d	-	-
Wigan North Western	d	-	-
Preston	d	-	-
Lancaster	a	-	-
Lancaster	d	-	-
Oxenholme Lake District	a	-	-
Oxenholme Lake District	d	2206	2200
Kendal		2210	2210
Burneside		2214	2220
Staveley		2219	2230
Windermere	a	2225	2240
Penrith for North Lakes		-	-
Carlisle	a	-	-

Times shown in this guide are correct at the time of issue, however, Avanti West Coast and TransPennine Express services may be subject to change. Please check before travelling.

Notes All services operate by Northern.

- AWC Run by Avanti West Coast.
- TP Run by TransPennine Express.
- Rail replacement bus service.

- ★ Runs until 19 June.
- ◇ Runs from 26 June.

Manchester - Preston - Windermere/Carlisle

Sunday

		●	■	●	●	◆	AWC GLC	TP GLC	TP GLC
Manchester Airport	d	-	0833	-	-	-	-	-	-
Manchester Piccadilly	d	-	0853	0853	-	-	-	1010	-
Manchester Oxford Rd	d	-	0856	0856	-	-	-	1026	-
Wigan North Western	d	-	0920	0920	-	-	1039	1045	▼
Preston	d	-	0948	0948	1030	-	1101	1100	1108
Lancaster	a	-	1005	1005	1047	-	1115		1124
Lancaster	d	-	1006	1006	1047	-	1118		1125
Oxenholme Lake District	a	-	1022	1022	1103	-	1131		1138
Oxenholme Lake District	d	0945	1030	1030	1104	1117	1132	1139	1202
Kendal		0955	1034	1034	1109	1121			1206
Burneside		1005	1038	1038	1112	1124			-
Staveley		1015	1043	1043	1117	1129			-
Windermere	a	1025	1049	1049	1123	1135			1219
Penrith for North Lakes		-	-	-	-	-		1149	▼
Carlisle	a	-	-	-	-	-	1209	1203	1217

		AWC GLC	AWC EDB	AWC GLC	■	*	AWC GLC	TP EDB	AWC GLC
Manchester Airport	d	-	-	-	1132	-	-	-	-
Manchester Piccadilly	d	-	-	-	1151	-	-	-	-
Manchester Oxford Rd	d	-	-	-	1154	1154		12v31	-
Wigan North Western	d	1126	1140	-	1225	1219	1238	▼	1326
Preston	d	1141	1155	-	1240	1245	1253	1306	1341
Lancaster	a	1156	1209	-	1254	1302	1307	1321	1355
Lancaster	d	1157	1210	-	1255	1302	1308	1322	1356
Oxenholme Lake District	a	1210	1224	-	1308	1333	1333	1321	1334
Oxenholme Lake District	d	1211	1225	1245	1309	1333	1333	1323	1335
Kendal				1249		1338	1338		
Burneside				1253		1341	1341		
Staveley				1258		1346	1346		
Windermere	a			1304		1353	1353		
Penrith for North Lakes		1237	▼	-	1335	-	-	▼	1436
Carlisle	a	1252	1302	-	1350	-	1400	1414	1451

Times shown in this guide are correct at the time of issue, however, Avanti West Coast and TransPennine Express services may be subject to change. Please check before travelling.

Notes	All services operate by Northern.
AWC Run by Avanti West Coast.	● Runs until 20 June.
TP Run by TransPennine Express.	◆ Runs from 27 June.
GLC To Glasgow Central	▶ Runs until 05 September.
EDB To Edinburgh Waverley	■ Runs until 12 September.
🚏 Rail replacement bus service.	* Runs from 12 September.
12v31 Departs from Manchester VICTORIA not Manchester Piccadilly.	★ Runs from 19 September.
	● Runs from 31 October.
	■ Runs from 27 June to 24 October.

Manchester - Preston - Windermere/Carlisle

Sunday

		AWC EDB	AWC GLC	AW GLC	AW GLC	TP EDB	AWC GLC
Manchester Airport	d	-	-	-	-	-	1430
Manchester Piccadilly	d	-	-	-	-	1410	1448
Manchester Oxford Rd	d	-	-	-	-	1426	1451
Wigan North Western	d	-	1338	1427	1427	1437	▼ 1517
Preston	d	-	1353	1442	1442	1452	1505
Lancaster	a	-	1408	1457	1457	1509	1520
Lancaster	d	-	1409	1458	1458	1510	1521
Oxenholme Lake District	a	-	1510		1523		1630
Oxenholme Lake District	d	1422	1512		1524	1529	1631
Kendal		1426					1533
Burneside		1430					1537
Staveley		1435					1542
Windermere	a	1441	▼	▼	▼	▼	1548
Penrith for North Lakes		-	1446	▼	1533	▼	1557
Carlisle	a	-	1501	1549	1548	1601	1612

		AWC EDB	TP GLC	AWC GLC	AWC GLC	AWC GLC	TP EDB	AWC GLC	AWC EDB
Manchester Airport	d	-	-	-	-	-	-	-	-
Manchester Piccadilly	d	-	1510	-	-	-	-	1610	-
Manchester Oxford Rd	d	-	1527	-	-	-	-	1626	-
Wigan North Western	d	1538	▼	1619	1627	1638	-	▼ 1725	1738
Preston	d	1553	1607	1638	1642	1653	-	1706	1742
Lancaster	a	1607	1621	1652	1656	1707	-	1720	1756
Lancaster	d	1608	1622	1653	1657	1708	-	1721	1757
Oxenholme Lake District	a		1635	1706		1721	-	1734	1811
Oxenholme Lake District	d		1636	1707		1723	1730	1735	1812
Kendal							1734		
Burneside							1738		
Staveley							1743		
Windermere	a						1749		
Penrith for North Lakes		1645	1701	1733	1733	▼	-	1800	▼ 1849
Carlisle	a	1700	1716	1748	1748	1800	-	1815	1849

Times shown in this guide are correct at the time of issue, however, Avanti West Coast and TransPennine Express services may be subject to change. Please check before travelling.

Notes	All services operate by Northern.
AWC Run by Avanti West Coast.	▶ Runs until 05 September.
TP Run by TransPennine Express.	* Runs from 12 September.
GLC To Glasgow Central	
EDB To Edinburgh Waverley	

Manchester - Preston - Windermere/Carlisle

Sunday

		AWC GLC	TP GLC	AW GLC ‡	TP GLC	AWC GLC	AWC EDB
Manchester Airport	d	-	1730	-	-	-	-
Manchester Piccadilly	d	-	1748	-	-	1810	-
Manchester Oxford Rd	d	-	1751	-	-	1826	-
Wigan North Western	d	-	1818	1827	1843	1838	1928
Preston	d	-	1834	1842	1859	1853	1904
Lancaster	a	-	1851	1856	1914	1907	1919
Lancaster	d	-	1851	1857	1915	1908	1920
Oxenholme Lake District	a	-	1926	1910	-	1921	1933
Oxenholme Lake District	d	1833	1927	1912	-	1923	1934
Kendal		1837	1932	-	-	-	2026
Burneside		1841	1935	-	-	-	2030
Staveley		1846	1940	-	-	-	2035
Windermere	a	1852	1947	-	-	-	2041
Penrith for North Lakes		-	-	1937	1953	-	1959
Carlisle	a	-	-	1952	2007	2000	2014

		AWC GLC	●	◆	AWC GLC ‡	AWC GLC
Manchester Airport	d	-	-	-	-	-
Manchester Piccadilly	d	-	-	-	-	-
Manchester Oxford Rd	d	-	-	-	-	-
Wigan North Western	d	2028	-	-	2038	2125
Preston	d	2043	-	-	2053	2142
Lancaster	a	2057	-	-	2108	2157
Lancaster	d	2058	-	-	2109	2158
Oxenholme Lake District	a	2111	-	-	2123	2211
Oxenholme Lake District	d	2113	2117	2121	2125	2213
Kendal		-	2121	2125	-	-
Burneside		-	2124	2129	-	-
Staveley		-	2129	2134	-	-
Windermere	a	-	2135	2140	-	-
Penrith for North Lakes		2138	-	-	-	2238
Carlisle	a	2153	-	-	2201	2253

Times shown in this guide are correct at the time of issue, however, Avanti West Coast and TransPennine Express services may be subject to change. Please check before travelling.

Notes

All services operate by Northern.

AWC Run by Avanti West Coast.

● Runs until 20 June.

TP Run by TransPennine Express.

◆ Runs from 27 June.

GLC To Glasgow Central

‡ Runs from 12 September.

EDB To Edinburgh Waverley

Train times

Leeds - Settle - Appleby - Carlisle

- Carlisle
- Armathwaite
- Lazonby & Kirkoswald
- Langwathby
- Appleby
- Kirkby Stephen
- Garsdale
- Dent
- Ribbleshead
- Horton in Ribblesdale
- Settle
- Skipton
- Leeds

Includes times for 'The Staycation Express' and the Sunday DalesRail services.



The Staycation Express

Following its successful season in 2020, Rail Charter Services returns **The Staycation Express** back to the world famous Settle and Carlisle railway line. Offering the opportunity to experience one of the UK's most historic and scenic rail journeys aboard a socially distanced, first-class charter train service.

Journeys are shown on the following pages with the code **RC** and are shown as **white text on a blue background** to highlight them from the regular train service along the route.

The service runs from late-July until early September and, as this is a charter service, only customers travelling with **pre-booked tickets** may travel on the journeys. Special connecting through fares are available between certain Northern services and the 'Staycation Express'.

Tickets for the 'Staycation Express' can only be booked online at railcharterservices.co.uk



Guide to timetable codes

The codes below are used on the following pages. Please check carefully, as train times may vary over the course of this timetable.

- a Arrival time.
- d Departure time.
- c Connecting train. Change at Skipton.
- e Connecting train. Change at Appleby.
- Interchange with the Keighley & Worth Valley Railway.
- RC** Rail Charter Services "The Staycation Express". **Pre-booked tickets only via railcharterservices.co.uk - National Rail tickets not valid.**
- BPN** To/from Blackpool North.
- NOT** To/from Nottingham via Sheffield, Barnsley & Wakefield Kirkgate.
- X** Pre-bookable restaurant car plus a buffet counter and trolley service.
- A** Mondays to Thursdays from 19 July until 9 September.
- B** Saturdays from 17 July until 4 September
- C** Sundays from 18 July until 5 September.
- Until 12 September, DalesRail service.**

Leeds - Skipton - Settle - Appleby - Carlisle

Monday to Friday

								RC A X		RC A X
Leeds	d	0517	0748	0920	09c56	1049	1318	1518	15c56	1648
ShIPLEY		0530	0801	0933	10c08	1103	1333	1533	16c08	1702
Bingley		0537	0806	0938	10c14	1107	1337	1537	16c15	1707
Keighley		0544	0811	0943	10c22	1113	1343	1543	16c22	1713
Skipton	a	0600	0824	0957	1039	1125	1355	1555	1639	1725
Skipton	d	0602	0826	0959	1118	1127	1357	1559	1718	1727
Gargrave		▼	0832	1004		1133	▼	1604		1732
Hellifield		0614	0840	1013		1141	1409	1613		1741
Long Preston		▼	▼	1015		1144	▼	▼		1743
Settle		0622	0850	1022	1138	1151	1417	1620	1737	1749
Horton in Ribblesdale		0630	0858	1031		1159	1425	1629		1758
Ribblehead		0638	0906	1039		1207	1433	1637		1806
Dent		0648	0916	1048		1217	1443	1646		1815
Garsdale		0653	0921	1054		1222	1448	1652		1821
Kirkby Stephen		0706	0934	1106		1235	1501	1704		1833
Appleby		0718	0948	1119	1232	1248	1514	1717	1828	1846
Langwathby		0732	1001	1132		1302	1528	1731	19e00	1900
Lazonby & Kirkoswald		0738	1007	1138		1308	1533	1736	19e05	1905
Armathwaite		0746	1015	1146		1316	1541	1744	19e13	1913
Carlisle	a	0802	1031	1201	1313	1331	1602	1800	19e28	1928

Leeds	d	1818	1949
ShIPLEY		1832	2002
Bingley		1837	2007
Keighley		1842	2012
Skipton	a	1855	2026
Skipton	d	1856	2027
Gargrave		1902	2033
Hellifield		1910	2042
Long Preston		1913	2044
Settle		1919	2050
Horton in Ribblesdale		1927	2059
Ribblehead		1935	2108
Dent		1944	-
Garsdale		1950	-
Kirkby Stephen		2002	-
Appleby		2015	-
Langwathby		2028	-
Lazonby & Kirkoswald		2034	-
Armathwaite		2042	-
Carlisle	a	2057	-

Notes	All services operate by Northern.
RC Rail Charter Services "The Staycation Express". Pre-booked tickets only via railcharterservices.co.uk - National Rail tickets not valid.	A Mondays to Thursdays from 19 July until 9 September.
X Pre-bookable restaurant car plus a buffet counter and trolley service.	c Connecting train. Change at Skipton
	e Connecting train. Change at Appleby.

Leeds - Skipton - Settle - Appleby - Carlisle

Saturday

				RC B x				RC B x		
Leeds	d	0620	0748	0919	09c56	1049	1318	1518	15c56	1648
ShIPLEY		0633	0801	0932	10c08	1103	1333	1533	16c08	1702
Bingley		0640	0806	0937	10c14	1107	1337	1537	16c15	1707
Keighley	Ⓜ	0647	0811	0942	10c22	1113	1343	1543	16c22	1713
Skipton	a	0703	0824	0957	1039	1125	1355	1555	1639	1725
Skipton	d	0705	0826	0959	1118	1127	1357	1559	1718	1727
Gargrave		▼	0832	1004		1133	▼	1604		1732
Hellifield		0718	0840	1013		1141	1409	1613		1741
Long Preston		▼	▼	1015		1144	▼	▼		1743
Settle		0726	0850	1022	1138	1151	1417	1620	1737	1749
Horton in Ribblesdale		0734	0858	1031		1159	1425	1629		1758
Ribblehead		0742	0906	1039		1207	1433	1637		1806
Dent		0752	0916	1048		1217	1443	1646		1815
Garsdale		0757	0921	1054		1222	1448	1652		1821
Kirkby Stephen		0810	0934	1106		1235	1501	1704		1833
Appleby		0822	0948	1119	1232	1248	1514	1717	1828	1846
Langwathby		0836	1001	1132		1302	1528	1731	19e00	1900
Lazonby & Kirkoswald		0842	1007	1138		1308	1533	1736	19e05	1905
Armathwaite		0850	1015	1146		1316	1541	1744	19e13	1913
Carlisle	a	0905	1031	1201	1313	1331	1602	1800	19e28	1928

Leeds	d	1818	1949
ShIPLEY		1832	2002
Bingley		1837	2007
Keighley	Ⓜ	1842	2012
Skipton	a	1855	2026
Skipton	d	1856	2027
Gargrave		1902	2033
Hellifield		1910	2042
Long Preston		1913	2044
Settle		1919	2050
Horton in Ribblesdale		1927	2059
Ribblehead		1935	2108
Dent		1944	-
Garsdale		1950	-
Kirkby Stephen		2002	-
Appleby		2015	-
Langwathby		2028	-
Lazonby & Kirkoswald		2034	-
Armathwaite		2042	-
Carlisle	a	2057	-

Notes

- RC Rail Charter Services "The Staycation Express". Pre-booked tickets only via railcharterservices.co.uk - National Rail tickets not valid.
- x Pre-bookable restaurant car plus a buffet counter and trolley service.
- B Saturdays from 17 July until 4 September.
- c Connecting train. Change at Skipton.
- e Connecting train. Change at Appleby.

Leeds - Skipton - Settle - Appleby - Carlisle

Sunday

				RC C x				RC C x		
Leeds	d	0859	-	1116	11c16	1232	1424	1623	16c23	1852
ShIPLEY		0913	-	1129	11c29	1245	1437	1637	16c37	1905
Bingley		0920	-	1134	11c34	1249	1442	1641	16c41	1909
Keighley	Ⓜ	0927	-	1139	11c39	1255	1447	1647	16c47	1916
Skipton	a	0943	-	1152	1152	1306	1502	1701	1701	1933
Skipton	d	0945	-	1152	1205	1309	1503	1701	1755	1933
Gargrave		0950	-	▼		1315	1509	▼		1933
Hellifield		0959	1028	1204		1323	1517	1713		1945
Long Preston		▼	▼	▼		1326	1520	▼		1945
Settle		1007	1037	1213	1230	1333	1526	1721	1815	1953
Horton in Ribblesdale		1016	1046			1342	1535	1730		2002
Ribblehead		1024	1054			1351	1543	1738		2010
Dent		1034	1104			1401	1553	1748		2020
Garsdale		1040	1109	▼		1407	1559	1753		2025
Kirkby Stephen		1053	1122	1251		1420	1612	1806		2038
Appleby		1106	1136	1305	1322	1432	1624	1819	1906	2051
Langwathby		1120	1150			1446	1638	1833	21e05	2105
Lazonby & Kirkoswald		1126	1156			1452	1644	1839	21e11	2111
Armathwaite		1134	1204	▼		1500	1652	1847	21e19	2119
Carlisle	a	1152	1219	1342	1405	1515	1708	1903	21e39	2139

Notes

- RC Rail Charter Services "The Staycation Express". Pre-booked tickets only via railcharterservices.co.uk - National Rail tickets not valid.
- x Pre-bookable restaurant car plus a buffet counter and trolley service.
- C Sundays from 18 July until 5 September.
- c Connecting train. Change at Skipton.
- e Connecting train. Change at Appleby.
- ▼ Until 12 September, DalesRail service. See page 78 for full timetable.

SAMARITANS

Talk it through We're here to listen

If you've got lots on your mind, we'll help you find your own way through it.

Contact Samaritans free – day or night, 365 days a year

Call free on

116 123

Email
jo@samaritans.org

Carlisle - Appleby - Settle - Skipton - Leeds

Monday to Friday

			RC A x				RC A x		
Carlisle	d	0549	0824	0824	1058	1340	1450	1509	1618 1824
Armathwaite		0603	0838	08e38	1112		1504		1632 1838
Lazonby & Kirkoswald		0610	0845	08e45	1120		1511		1639 1845
Langwathby		0617	0852	08e52	1126		1518		1646 1852
Appleby		0631	0906	0940	1141	1417	1532	1552	1700 1906
Kirkby Stephen		0644	0920		1154	1431	1546		1714 1920
Garsdale		0658	0933		1208		1559		1727 1933
Dent		0703	0938		1213		1604		1732 1938
Ribblehead		0713	0948		1222		1614		1742 1948
Horton in Ribblesdale		0719	0954		1229		1620		1748 1954
Settle		0727	1002	1035	1237	1507	1628	1647	1756 2002
Long Preston		0733					1634		1802 2008
Hellifield		0736	1010		1244	1514	1637		1805 2011
Gargrave		0744					1522 1645		1813 2019
Skipton	a	0752	1024	1100	1259	1528	1654	1705	1821 2027
Skipton	d	0754	1025	1117	1300	1530	1659	1717	1829 2029
Keighley		0805	1038	11c31	1310	1541	1709	17c31	1839 2039
Bingley		0812	1045	11c37	1315	1546	1714	17c37	1844 2044
Shiplay		0817	1050	11c44	1320	1551	1720	17c44	1850 2051
Leeds	a	0832	1108	12c00	1338	1605	1738	18c00	1908 2106

Carlisle	d	2013	-
Armathwaite		2027	-
Lazonby & Kirkoswald		2034	-
Langwathby		2041	-
Appleby		2055	-
Kirkby Stephen		2108	-
Garsdale		2121	-
Dent			-
Ribblehead			2145
Horton in Ribblesdale			2151
Settle		2149	2159
Long Preston			2205
Hellifield			2208
Gargrave			2216
Skipton	a	2210	2225
Skipton	d	2211	2226
Keighley		2221	2241
Bingley		2226	2247
Shiplay		2231	2255
Leeds	a	2248	2312

Notes	All services operate by Northern.
RC Rail Charter Services "The Staycation Express". Pre-booked tickets only via railcharterservices.co.uk - National Rail tickets not valid.	A Mondays to Thursdays from 19 July until 9 September.
x Pre-bookable restaurant car plus a buffet counter and trolley service.	c Connecting train. Change at Skipton.
	e Connecting train. Change at Appleby.

Carlisle - Appleby - Settle - Skipton - Leeds

Saturday

			RC B x				RC B x			
Carlisle	d	-	0754	0754	0927	1058	1340	1450	1509	1618
Armathwaite		-	0808	08e08	0941	1112	↓	1504	↓	1632
Lazonby & Kirkoswald		-	0815	08e15	0948	1120	↓	1511	↓	1639
Langwathby		-	0821	08e21	0955	1126	↓	1518	↓	1646
Appleby		-	0836	0940	1009	1141	1416	1532	1552	1700
Kirkby Stephen		-	0849	↓	1023	1154	1429	1546	↓	1714
Garsdale		-	0903	↓	1036	1208	↓	1559	↓	1727
Dent		-	0908	↓	1041	1213	↓	1604	↓	1732
Ribblehead		0713	0917	↓	1051	1222	↓	1614	↓	1742
Horton in Ribblesdale		0719	0924	↓	1057	1229	↓	1620	↓	1748
Settle		0727	0932	1035	1105	1237	1506	1628	1647	1756
Long Preston		0733	↓	↓	↓	↓	1634	↓	↓	1802
Hellifield		0736	0939	↓	1113	1244	1514	1637	↓	1805
Gargrave		0744	↓	↓	↓	1522	1645	↓	↓	1813
Skipton	a	0752	0954	1100	1127	1259	1527	1654	1705	1821
Skipton	d	0754	0956	1117	1128	1300	1529	1659	1717	1829
Keighley	Ⓜ	0807	1009	11c31	1138	1310	1541	1709	17c31	1839
Bingley		0812	1013	11c37	1145	1315	1546	1714	17c37	1844
Shipton		0818	1019	11c44	1150	1320	1551	1720	17c44	1850
Leeds	a	0834	1036	12c00	1204	1338	1605	1738	18c00	1908

Carlisle	d	1824	2015	-
Armathwaite		1838	2029	-
Lazonby & Kirkoswald		1845	2036	-
Langwathby		1852	2043	-
Appleby		1906	2057	-
Kirkby Stephen		1920	2111	-
Garsdale		1933	2124	-
Dent		1938	-	-
Ribblehead		1948	↓	2145
Horton in Ribblesdale		1954	↓	2153
Settle		2002	2148	2201
Long Preston		2008	↓	2207
Hellifield		2011	↓	2210
Gargrave		2019	↓	2218
Skipton	a	2027	2209	2226
Skipton	d	2029	2211	2226
Keighley	Ⓜ	2039	2221	2241
Bingley		2044	2226	2247
Shipton		2051	2231	2254
Leeds	a	2106	2248	2311

Notes	All services operate by Northern.
RC Rail Charter Services "The Staycation Express". Pre-booked tickets only via railcharterservices.co.uk - National Rail tickets not valid.	B Saturdays from 17 July until 4 September
x Pre-bookable restaurant car plus a buffet counter and trolley service.	c Connecting train. Change at Skipton.
	e Connecting train. Change at Appleby.

Carlisle - Appleby - Settle - Skipton - Leeds

Sunday

			RC C x		NOT	RC C x	BPN			
Carlisle	d	0925	0925	1223	1520	1540	1607	1648	1725	1911
Armathwaite		0939	09e39	1237	1534	↓	↓	1702	1739	1925
Lazonby & Kirkoswald		0946	09e46	1244	1541	↓	↓	1709	1746	1932
Langwathby		0953	09e53	1251	1548	↓	↓	1715	1753	1939
Appleby		1007	1029	1305	1602	1621	1644	1731	1808	1953
Kirkby Stephen		1021	↓	1319	1615	↓	1657	1744	1822	2007
Garsdale		1034	↓	1332	1628	↓	↓	1757	1835	2020
Dent		1040	↓	1338	1633	↓	↓	1803	1841	2026
Ribblehead		1049	↓	1347	1643	↓	↓	1812	1850	2035
Horton in Ribblesdale		1056	↓	1354	1650	↓	↓	1819	1857	2042
Settle		1104	1122	1402	1658	1715	1734	1827	1906	2051
Long Preston		1110	↓	1408	1704	↓	↓	↓	↓	2056
Hellifield		1113	↓	1411	1707	↓	1742	1837	1913	2059
Gargrave		1121	↓	1420	↓	↓	↓	-	↓	2107
Skipton	a	1130	1141	1430	1720	1741	1757	-	1928	2116
Skipton	d	1130	1212	1430	1723	1758	1758	-	1930	2117
Keighley	Ⓜ	1140	12c26	1440	1733	18c08	1808	-	1940	2127
Bingley		1144	12c32	1444	1740	18c13	1813	-	1945	2132
Shipton		1149	12c39	1449	1747	18c18	1818	-	1950	2138
Leeds	a	1206	12c54	1509	1805	18c34	1834	-	2007	2154

Notes	All services operate by Northern.
RC Rail Charter Services "The Staycation Express". Pre-booked tickets only via railcharterservices.co.uk - National Rail tickets not valid.	C Sundays from 18 July until 5 September.
x Pre-bookable restaurant car plus a buffet counter and trolley service.	c Connecting train. Change at Skipton.
	e Connecting train. Change at Appleby.
	✓ Until 12 September, DalesRail service. See page 78 for full timetable
BPN To Blackpool North.	
NOT To Nottingham via Wakefield Kirkgate, Barnsley & Sheffield.	

Blackpool - Settle - Appleby - Carlisle

Sundays until 12 September

Blackpool North	0840
Poulton-le-Fylde	0846
Kirkham & Wesham	0855
Preston	0907
Lostock Hall	0914
Bamber Bridge	0917
Blackburn	0928
Ramsgreave & Wilpshire	0934
Langho	0939
Whalley	0943
Clitheroe	0950
Hellifield	1028
Long Preston	▼
Settle	1037
Horton in Ribblesdale	1046
Ribblehead	1054
Dent	1104
Garsdale	1109
Kirkby Stephen	1122
Appleby	1136
Langwathby	1150
Lazonby & Kirkoswald	1156
Armathwaite	1204
Carlisle	1219

Carlisle - Appleby - Settle - Blackpool

Sundays until 12 September

Carlisle	1648
Armathwaite	1702
Lazonby & Kirkoswald	1709
Langwathby	1715
Appleby	1731
Kirkby Stephen	1744
Garsdale	1757
Dent	1803
Ribblehead	1812
Horton in Ribblesdale	1819
Settle	1827
Long Preston	▼
Hellifield	1837
Clitheroe	1900
Whalley	1906
Langho	1911
Ramsgreave & Wilpshire	1916
Blackburn	1928
Bamber Bridge	1937
Lostock Hall	1942
Preston	1952
Kirkham & Wesham	2001
Poulton-le-Fylde	2010
Blackpool North	2019

Train times

Leeds - Lancaster - Morecambe

- Heysham Port
- Morecambe
- Lancaster
- Carnforth
- Wennington
- Bentham
- Clapham (North Yorkshire)
- Giggleswick
- Hellifield
- Skipton
- Leeds

Leeds - Skipton - Lancaster - Morecambe

Monday to Friday

Leeds	d	-	0819	1218	1418	1726	1918	
Shipley		-	0832	1233	1433	1740	1932	
Bingley		-	0837	1237	1438	1745	1937	
Keighley	🚶	-	0842	1243	1443	1752	1943	
Skipton	a	-	0855	1256	1457	1808	1957	
Skipton	d	0522	0856	1258	1458	1810	2000	
Gargrave		0528	0902	1304	1504	1815	2006	
Hellifield		0537	0910	1312	1513	1824	2014	
Long Preston		0540	0913	1315	1515	1826	2017	
Giggleswick		0548	0921	1323	1523	1834	2025	
Clapham		0556	0929	1331	1531	1843	2034	
Bentham		0603	0935	1337	1538	1849	2040	
Wennington		0608	0940	1343	1543	1855	2046	
Carnforth		0622	0956	1359	1559	1911	2102	
Lancaster	a	0631	1006	1409	1608	1924	2115	
Lancaster	d	-	1016	1413	1622	1940	-	
Bare Lane		-	1023	1419	1629	1947	-	
Morecambe	a	-	1027	1423	1633	1951	-	

Lancaster - Morecambe - Heysham Port

Monday to Friday

Lancaster	d	0517	0618	0723	0756	0841	0923	1016	1050	1136
Bare Lane		0541	0624	0728	0801	0846	0928	1023	1055	1142
Morecambe	a	0545	0628	0732	0805	0850	0932	1027	1059	1146
Heysham Port	🚢 a	-	-	-	-	-	-	-	-	-

Lancaster	d	1249	1358	1413	1440	1528	1622	1643	1715	1750
Bare Lane		1255	1404	1419	1446	1534	1629	1649	1721	1755
Morecambe	a	1259	1408	1423	1450	1538	1633	1653	1725	1759
Heysham Port	🚢 a	1317	-	-	-	-	-	-	-	-

Lancaster	d	1828	1905	1940	2038	2135	2204	2236	
Bare Lane		1833	1911	1947	2044	2141	2210	2242	
Morecambe	a	1837	1915	1951	2048	2145	2214	2246	
Heysham Port	🚢 a	-	-	-	-	-	-	-	

Leeds - Skipton - Lancaster - Morecambe

Saturday

Leeds	d	-	0819	1218	1418	1726	1918	
Shipley		-	0832	1233	1433	1740	1932	
Bingley		-	0837	1237	1438	1745	1937	
Keighley	🚶	-	0842	1243	1443	1752	1943	
Skipton	a	-	0855	1256	1457	1807	1957	
Skipton	d	0519	0856	1258	1458	1808	2000	
Gargrave		0525	0902	1304	1504	1814	2006	
Hellifield		0534	0910	1312	1513	1822	2014	
Long Preston		0537	0913	1315	1515	1825	2017	
Giggleswick		0545	0921	1323	1523	1833	2025	
Clapham		0554	0929	1331	1531	1841	2034	
Bentham		0601	0935	1337	1538	1848	2040	
Wennington		0606	0940	1343	1543	1853	2046	
Carnforth		0620	0956	1359	1559	1909	2102	
Lancaster	a	0632	1006	1410	1608	1919	2115	
Lancaster	d	-	1018	1414	1622	1934	-	
Bare Lane		-	1024	1420	1629	1941	-	
Morecambe	a	-	1028	1424	1633	1945	-	

Lancaster - Morecambe - Heysham Port

Saturday

Lancaster	d	0517	0625	0723	0756	0841	0923	1018	1050	1128
Bare Lane		0541	0631	0728	0801	0846	0928	1024	1055	1133
Morecambe	a	0545	0635	0732	0805	0850	0932	1028	1059	1137
Heysham Port	🚢 a	-	-	-	-	-	-	-	-	-

Lancaster	d	1249	1358	1414	1451	1523	1622	1643	1715	1750
Bare Lane		1255	1404	1420	1456	1528	1629	1649	1721	1755
Morecambe	a	1259	1408	1424	1500	1532	1633	1653	1725	1759
Heysham Port	🚢 a	1317	-	-	-	-	-	-	-	-

Lancaster	d	1828	1905	1934	2036	2135	2206	
Bare Lane		1833	1910	1941	2041	2140	2211	
Morecambe	a	1837	1914	1945	2045	2144	2215	
Heysham Port	🚢 a	-	-	-	-	-	-	

Notes

- a Arrival time.
- d Departure time.
- 🚶 Interchange with the Keighley & Worth Valley Railway.

All services operate by Northern.

Notes

- a Arrival time.
- d Departure time.
- 🚢 Interchange with ferry service to and from the Isle of Man.

★ From 21 June.

Leeds - Skipton - Lancaster - Morecambe

Sunday

		HHB				
Leeds	d	0831	1033	1329	1532	1730
Shiplay		0845	1046	1342	1545	1743
Bingley		0852	1050	1346	1549	1747
Keighley	🚶	0859	1056	1352	1555	1753
Skipton	a	0915	1108	1404	1608	1806
Skipton	d	0917	1110	1406	1609	1809
Gargrave		0922	1115	1412	1615	1815
Hellifield		0931	1124	1420	1623	1823
Long Preston		0934	1126	1423	1626	1826
Giggleswick		0941	1134	1431	1634	1834
Clapham		0949	1142	1439	1642	1842
Bentham		0956	1148	1445	1648	1848
Wennington		1001	1153	1450	1653	1853
Carnforth		1015	1209	1506	1709	1909
Lancaster	a	1027	1219	1518	1721	1921
Lancaster	d	1030	1230	1523	1724	1928
Bare Lane		1035	1236	1529	1730	1934
Morecambe	a	1039	1240	1533	1734	1938

Morecambe - Lancaster - Skipton - Leeds

Monday to Friday

Morecambe	d	-	1031	1432	1731	2006	-
Bare Lane		-	1035	1437	1735	2010	-
Lancaster	a	-	1042	1443	1742	2016	-
Lancaster	d	0648	1046	1448	1745	2030	2131
Carnforth		0658	1056	1457	1756	2040	2143
Wennington		0712	1110	1511	1809	2054	2157
Bentham		0718	1116	1517	1815	2100	2202
Clapham		0725	1122	1523	1821	2106	2209
Giggleswick		0734	1133	1534	1832	2117	2219
Long Preston		0742	1139	1540	1839	2123	2226
Hellifield		0745	1142	1543	1842	2126	2228
Gargrave		0754	1150	1551	1850	2134	2237
Skipton	a	0802	1157	1558	1858	2141	2244
Skipton	d	0804	1159	1600	1859	2143	-
Keighley	🚶	0817	1209	1610	1909	2155	-
Bingley		0822	1214	1615	1914	2200	-
Shiplay		0827	1219	1620	1920	2206	-
Leeds	a	0841	1237	1638	1939	2222	-

Westbound services

Lancaster - Morecambe - Heysham

Sunday

Lancaster	d	1030	1230	1523	1724	1928
Bare Lane		1035	1236	1529	1730	1934
Morecambe	a	1039	1240	1533	1734	1938
Heysham Port	🚶 a	-	1259	-	-	-

Eastbound services

Morecambe - Lancaster - Skipton - Leeds

Saturday

Morecambe	d	-	1033	1432	1731	2006	-
Bare Lane		-	1037	1437	1735	2010	-
Lancaster	a	-	1043	1443	1742	2016	-
Lancaster	d	0647	1047	1447	1745	2030	2131
Carnforth		0657	1057	1456	1756	2040	2143
Wennington		0711	1111	1510	1809	2054	2157
Bentham		0717	1117	1516	1815	2100	2202
Clapham		0724	1123	1522	1821	2106	2209
Giggleswick		0733	1132	1533	1830	2117	2219
Long Preston		0742	1138	1539	1837	2123	2226
Hellifield		0745	1141	1542	1840	2126	2228
Gargrave		0754	1150	1550	1848	2134	2237
Skipton	a	0802	1157	1557	1856	2141	2244
Skipton	d	0804	1159	1559	1859	2143	-
Keighley	🚶	0817	1209	1609	1909	2155	-
Bingley		0822	1214	1614	1914	2200	-
Shiplay		0827	1219	1620	1920	2206	-
Leeds	a	0841	1238	1638	1939	2222	-

Notes

a Arrival time.
d Departure time.

HHB To Heysham Port, arriving 1259.

All services operate by Northern.

🚶 Interchange with ferry service to and from the Isle of Man.

🚶 Interchange with the Keighley & Worth Valley Railway.

Notes

a Arrival time.
d Departure time.

All services operate by Northern.

🚶 Interchange with the Keighley & Worth Valley Railway.

Heysham Port - Lancaster - Morecambe

Monday to Friday

		LDS									
Heysham Port	d	-	-	-	-	-	-	-	-	-	-
Morecambe	d	0602	0700	0741	0823	0854	0941	1031	1122	1201	
Bare Lane		0606	0704	0745	0827	0858	0945	1035	1126	1205	
Lancaster	a	0613	0712	0751	0835	0905	0951	1042	1132	1214	

		LDS					LDS				
Heysham Port	d	1320	-	-	-	-	-	-	-	-	-
Morecambe	d	1339	1421	1432	1504	1543	1638	1704	1731	1813	
Bare Lane		1343	1425	1437	1508	1547	1642	1708	1735	1817	
Lancaster	a	1349	1433	1443	1514	1553	1648	1714	1742	1824	

		LDS							
Heysham Port	d	-	-	-	-	-	-	-	-
Morecambe	d	1841	1949	2006	2055	2149	2221	2252	
Bare Lane		1845	1953	2010	2059	2153	2225	2256	
Lancaster	a	1851	2000	2016	2107	2159	2231	2302	

Morecambe - Lancaster - Skipton - Leeds

Saturday

		LDS									
Heysham Port	d	-	-	-	-	-	-	-	-	-	-
Morecambe	d	0610	0700	0741	0823	0854	0941	1033	1115	1141	
Bare Lane		0614	0704	0745	0827	0858	0945	1037	1119	1145	
Lancaster	a	0621	0712	0751	0835	0905	0951	1043	1124	1151	

		LDS					LDS				
Heysham Port	d	1320	-	-	-	-	-	-	-	-	
Morecambe	d	1339	1422	1432	1509	1543	1638	1704	1731	1813	
Bare Lane		1343	1426	1437	1513	1547	1642	1708	1735	1817	
Lancaster	a	1349	1433	1443	1518	1553	1648	1714	1742	1824	

		LDS							
Heysham Port	d	-	-	-	-	-	-	-	-
Morecambe	d	1841	1941	2006	2055	2115	2148	2220	
Bare Lane		1845	1945	2010	2059	2119	2152	2224	
Lancaster	a	1851	1951	2016	2106	2125	2158	2230	

Notes

- All services operate by Northern.
- a Arrival time
 - d Departure time
 - ☒ Interchange with ferry service to and from the Isle of Man.
 - LDS To Leeds via Skipton.
 - ★ From 21 June.
 - Runs until 19 June.
 - Runs from 26 June.

Morecambe - Lancaster - Skipton - Leeds

Sunday

		HHB						
Morecambe	d	1049	1322	1540	1738	2004	-	
Bare Lane		1053	1326	1544	1742	2008	-	
Lancaster	a	1059	1333	1549	1748	2015	-	
Lancaster	d	1105	1344	1552	1751	2018	2131	
Carnforth		1115	1354	1602	1801	2029	2143	
Wennington		1129	1408	1615	1814	2043	2157	
Bentham		1135	1414	1621	1820	2048	2202	
Clapham		1141	1420	1627	1827	2055	2209	
Giggleswick		1150	1429	1636	1835	2103	2219	
Long Preston		1159	1437	1645	1844	2112	2226	
Hellifield		1202	1440	1648	1847	2115	2228	
Gargrave		1210	1448	1656	1855	2123	2237	
Skipton	a	1219	1456	1704	1903	2132	2244	
Skipton	d	1222	1458	1706	1905	2133	-	
Keighley	☒	1232	1508	1716	1915	2143	-	
Bingley		1238	1512	1721	1920	2148	-	
Shipley		1248	1517	1726	1925	2154	-	
Leeds	a	1304	1537	1744	1944	2209	-	

Morecambe - Lancaster - Skipton - Leeds

Sunday

		LDS	LDS	LDS	LDS	LDS
Heysham Port	d	-	1304	-	-	-
Morecambe	d	1049	1322	1540	1738	2004
Bare Lane		1053	1326	1544	1742	2008
Lancaster	a	1059	1333	1549	1748	2015

Notes

- All services operate by Northern.
- a Arrival time.
 - d Departure time.
 - HHB From Heysham Port, departing 1304
 - LDS To Leeds via Skipton.
 - ☒ Interchange with ferry service to and from the Isle of Man.
 - ☒ Interchange with the Keighley & Worth Valley Railway.

SAMARITANS

Talk it through We're here to listen

If you've got lots on your mind,
we'll help you find your
own way through it.

Contact Samaritans free –
day or night, 365 days a year

Call free on

116 123

Email

jo@samaritans.org

Train times

Carlisle - Hexham - Newcastle

- Carlisle
- Wetheral
- Brampton
- Haltwhistle
- Bardon Mill
- Haydon Bridge
- Hexham
- Corbridge
- Riding Mill
- Stocksfield
- Prudhoe
- Wylam
- Blaydon
- Metro Centre
- Dunston
- Newcastle

	SX SLB	SO SLB	SO NNT	SX NNT	MPT	MPT	MPT	MPT	
Carlisle	d -	-	-	0557	0557	0632	0657	0726	-
Wetheral	-	-	-	0604	0604	0639	0704	-	-
Brampton	-	-	-	0614	0614	▼ 0714	▼	-	-
Haltwhistle	-	-	-	0629	0629	0706	0729	0754	-
Bardon Mill	-	-	-	0636	0636	0713	0736	▼	-
Haydon Bridge	-	-	-	0642	0642	0719	0741	▼	-
Hexham	0609	0609	0637	0652	0652	0731	0752	0814	0826
Corbridge	0613	0614	0642	▼	0657	0735	0756	▼	0831
Riding Mill	0618	0618	0646	▼	0701	0740	0801	▼	0835
Stocksfield	0622	0622	0650	▼	0705	0744	0805	▼	0839
Prudhoe	0626	0627	0655	0704	0710	0748	0809	0826	0844
Wylam	0631	0631	0659	0709	0715	0753	0814	0831	-
Blaydon	0637	0637	0705	0715	0721	0759	0820	0841	▼
MetroCentre	0641	0642	0710	0720	0726	0804	0825	0846	0856
Dunston	0645	0645	0713	0724	0729	0807	0828	▼	▼
Newcastle	a 0651	0652	0720	0733	0736	0814	0839	0854	0907

	MPT	MPT	NNT	MPT	BBT	MPT	MPT	MPT	
Carlisle	d 0803	0820	0850	-	0922	0952	-	1023	1054
Wetheral	0810	0827	0857	-	0932	▼	-	1030	▼
Brampton	▼	0837	▼	-	0942	▼	-	▼	▼
Haltwhistle	0833	0852	0920	-	0957	1020	-	1053	1122
Bardon Mill	0840	0859	▼	-	▼	▼	-	1100	▼
Haydon Bridge	0846	0905	0931	-	1007	▼	-	1106	▼
Hexham	0857	0918	0942	0956	1018	1040	1055	1118	1142
Corbridge	0901	▼	▼	1000	▼	▼	1059	▼	▼
Riding Mill	0906	▼	▼	1005	▼	▼	1104	▼	▼
Stocksfield	0910	▼	▼	1009	▼	▼	1108	▼	▼
Prudhoe	0914	0930	0954	1013	1030	1052	1112	1130	1154
Wylam	0919	▼	▼	1018	▼	▼	1117	▼	▼
Blaydon	0925	▼	▼	1024	▼	▼	1123	▼	▼
MetroCentre	0930	0944	1006	1029	1044	1104	1128	1144	1208
Dunston	0933	▼	▼	1032	▼	▼	1131	▼	▼
Newcastle	a 0945	0955	1014	1039	1054c	1112	1138	1153	1222



Guide to timetable codes

The codes below are used on the following pages. Please check carefully, as train times may vary over the course of this timetable.

- a Arrival time.
- d Departure time.
- c 2 minutes earlier on Saturdays.

SO Runs Saturdays only.

SX Runs Mondays to Fridays only.

DRY Dry train. Alcohol in opened and unopened containers not permitted. Travel may also be refused if you are under the influence.

- Hartlepool on Mondays to Fridays, Sunderland on Saturdays.

- BBT** To Battersby.
- CHT** To Chathill.
- HPL** To Hartlepool.
- MBR** To Middlesbrough.
- MPT** To Morpeth.
- NNT** To Nunthorpe.
- SLB** To Saltburn.
- WTB** To Whitby.

Notes All services operate by Northern.

- SO** Runs Saturdays only.
- SLB** To Saltburn.
- SX** Runs Mondays to Fridays only.
- NNT** To Nunthorpe.
- SR** Operated by ScotRail
- BBT** To Battersby.
- c** 2 minutes earlier on Saturdays.

Carlisle - Hexham - Newcastle

Monday to Saturday

	WTB	MPT	SO NNT	SX	MPT	NNT	MPT		
Carlisle d	-	1125	1152	-	-	1225	1253	-	1332
Wetheral	-	1132	-	-	-	1232	-	-	1339
Brampton	-	1142	▼	-	-	▼	▼	-	1349
Haltwhistle	-	1157	1220	-	-	1255	1321	-	1404
Bardon Mill	-	▼	▼	-	-	1302	-	-	▼
Haydon Bridge	-	1207	▼	-	-	1308	▼	-	1414
Hexham	1156	1218	1240	1255	1256	1319	1341	1356	1425
Corbridge	1200	▼	▼	1259	1300	▼	▼	1400	▼
Riding Mill	1205	▼	▼	1304	1305	▼	▼	1405	▼
Stocksfield	1209	▼	▼	1308	1309	▼	▼	1409	▼
Prudhoe	1213	1230	1252	1312	1313	1331	1353	1413	1437
Wylam	1218	▼	▼	1317	1318	▼	▼	1418	▼
Blaydon	1224	▼	▼	1323	1324	▼	▼	1424	▼
MetroCentre	1229	1244	1304	1328	1329	1344	1405	1429	1449
Dunston	1232	▼	▼	1331	1332	▼	▼	1432	▼
Newcastle a	1239	1255	1313	1338	1339	1352	1413	1439	1457

	BBT	WTB	SX MPT	SO MPT	NNT	CHT			
Carlisle d	1355	-	1454	-	1519	1525	1552	-	1622
Wetheral	▼	-	▼	-	1526	1532	▼	-	1629
Brampton	▼	-	▼	-	1536	1542	▼	-	▼
Haltwhistle	1423	-	1522	-	1551	1557	1620	-	1652
Bardon Mill	▼	-	▼	-	1558	1604	▼	-	1659
Haydon Bridge	▼	-	▼	-	1603	1609	▼	-	1705
Hexham	1443	1456	1542	1556	1614	1620	1640	1656	1716
Corbridge	▼	1500	▼	1600	▼	▼	▼	1700	▼
Riding Mill	▼	1505	▼	1605	▼	▼	▼	1705	▼
Stocksfield	▼	1509	▼	1609	▼	▼	▼	1709	▼
Prudhoe	1455	1513	1554	1613	1626	1632	1652	1713	1728
Wylam	▼	1518	▼	1618	▼	▼	▼	1718	▼
Blaydon	▼	1524	▼	1624	▼	▼	▼	1724	▼
MetroCentre	1507	1529	1606	1629	1638	1644	1704	1729	1740
Dunston	▼	1532	▼	1632	▼	▼	▼	1732	1743
Newcastle a	1516	1539	1615	1639	1646	1652	1715	1739	1750

Notes All services operate by Northern.

- SO Runs Saturdays only. CHT To Chathill.
- SX Runs Mondays to Fridays only. BBT To Battersby.
- MBR To Middlesbrough.
- MPT To Morpeth.
- NNT To Nunthorpe.
- WTB To Whitby.

Carlisle - Hexham - Newcastle

Monday to Saturday

	MPT	MBR	MPT	MBR	SX	SO	MBR		
Carlisle d	1654	-	1724	-	1753	-	1839	1849	-
Wetheral	▼	-	1731	-	▼	-	1846	1856	-
Brampton	▼	-	1741	-	▼	-	1856	1906	-
Haltwhistle	1722	-	1756	-	1821	-	1912	1921	-
Bardon Mill	▼	-	1803	-	▼	-	1919	1928	-
Haydon Bridge	▼	-	1809	-	▼	-	1924	1933	-
Hexham	1742	1759	1820	-	1841	1856	1934	1943	2000
Corbridge	▼	1804	▼	-	▼	1900	▼	▼	2005
Riding Mill	▼	1808	▼	-	▼	1905	▼	▼	2009
Stocksfield	▼	1812	▼	-	▼	1909	▼	▼	2013
Prudhoe	1754	1817	1832	1839	1853	1913	1946	1955	2018
Wylam	▼	1821	▼	1844	▼	1918	▼	▼	2022
Blaydon	▼	1827	▼	1850	▼	1924	▼	▼	2028
MetroCentre	1806	1832	1844	1855	1905	1929	1958	2007	2033
Dunston	1809	1835	▼	1858	▼	1932	▼	▼	▼
Newcastle a	1815	1842	1853	1905	1914	1939	2007	2016	2042

	SO	MBR	SO	SX	SO	SX	
Carlisle d	-	2009	2107	2204	2204	-	-
Wetheral	-	▼	2114	2211	2211	-	-
Brampton	-	▼	2124	2221	2221	-	-
Haltwhistle	-	2037	2139	2236	2236	-	-
Bardon Mill	-	2044	▼	2243	2243	-	-
Haydon Bridge	-	2050	2149	2249	2249	-	-
Hexham	-	2101	2200	2259	2259	2325	2341
Corbridge	-	2105	2204	2304	2304	2330	2346
Riding Mill	-	2110	2209	2308	2308	2334	2350
Stocksfield	-	2114	2213	2312	2312	2338	2354
Prudhoe	2038	2118	2217	2317	2317	2343	2359
Wylam	2043	2123	2222	2321	2321	▼	0004
Blaydon	2048	2129	2228	2327	2327	▼	▼
MetroCentre	2053	2134	2233	2332	2332	2355	0013
Dunston	2056	▼	▼	2335	▼	▼	▼
Newcastle a	2103	2143	2241	2341	2342	0005	0024

Notes All services operate by Northern.

- SO Runs Saturdays only. MBR To Middlesbrough.
- SX Runs Mondays to Fridays only. MPT To Morpeth.
- Hartlepool on Mondays to Fridays, Sunderland on Saturdays.

Carlisle - Hexham - Newcastle

Sunday

		NNT	WTB	NNT	NNT	WTB	NNT	NNT		
Carlisle	d	0844	0954	1054	1154	1254	1354	1449	1554	1652
Wetheral		0851	▼	1101	▼	1301	▼	1456	▼	1659
Brampton		0901	▼	1111	▼	1311	▼	1506	▼	1709
Haltwhistle		0916	1022	1126	1222	1326	1422	1521	1622	1724
Bardon Mill		0923	1029	▼	1229	▼	1429	▼	1629	▼
Haydon Bridge		0929	1035	▼	1235	▼	1435	1531	1635	1734
Hexham		0940	1046	1145	1246	1345	1446	1542	1646	1745
Corbridge		0944	1050	1150	1250	1350	1450	1546	1650	1749
Riding Mill		0949	1055	1154	1255	1354	1455	1551	1655	1754
Stocksfield		0953	1059	1158	1259	1358	1459	1555	1659	1758
Prudhoe		0957	1103	1203	1303	1403	1503	1559	1703	1802
Wylam		1002	1108	1207	1308	1407	1508	1604	1708	1807
Blaydon		1008	▼	1213	▼	1413	▼	1610	▼	1812
MetroCentre		1013	1117	1218	1317	1418	1517	1615	1717	1817
Dunston		▼	▼	▼	▼	▼	▼	▼	▼	▼
Newcastle	a	1022	1126	1227	1327	1427	1526	1623	1726	1826

		MBR	MBR	MBR	
Carlisle	d	1754	1848	1948	2038
Wetheral		▼	1855	1955	2045
Brampton		▼	1905	2005	2055
Haltwhistle		1822	1920	2020	2110
Bardon Mill	a	1829	▼	2027	2117
Haydon Bridge	d	1835	1930	2033	2123
Hexham		1846	1941	2043	2133
Corbridge		1850	1945	2048	2138
Riding Mill		1855	1950	2052	2142
Stocksfield		1859	1954	2056	2146
Prudhoe		1903	1958	2101	2151
Wylam		1908	2003	2105	2155
Blaydon		▼	2009	2111	2201
MetroCentre		1917	2014	2116	2206
Dunston		▼	▼	▼	2209
Newcastle	a	1926	2023	2125	2216

Notes All services operate by Northern.

MBR To Middlesbrough.

NNT To Nunthorpe.

WTB To Whitby

Newcastle - Hexham - Carlisle

Monday to Saturday

						SX	SO	SX	SO		
Newcastle	d	0542	0620	0702	0725	0740	0740	0805	0805	0823	
Dunston		▼	0625	▼	0730	▼	▼	▼	▼	▼	
MetroCentre		0549	0629	0710	0734	0748	0748	0814	0814	0831	
Blaydon		0554	0633	0714	0738	▼	▼	▼	▼	0835	
Wylam		0600	0639	0720	0744	▼	▼	▼	▼	0841	
Prudhoe		0604	0644	0725	0749	0759	0758	0825	0825	0846	
Stocksfield		0609	0648	0729	▼	0804	0803	▼	▼	0850	
Riding Mill		0613	▼	0734	▼	0808	0807	▼	▼	0855	
Corbridge		0617	▼	0738	▼	0812	0812	▼	▼	0859	
Hexham		0624	0659	0744	0802	0818	0818	0838	0838	0905	
Haydon Bridge		▼	0708	▼	0811	-	-	▼	▼	0847	0915
Bardon Mill		▼	0714	▼	0817	-	-	▼	▼	0921	▼
Haltwhistle		0643	0722	0803	0825	-	-	0857	0859	0928	
Brampton		▼	0737	▼	0840	-	-	▼	▼	▼	
Wetheral		▼	0746	0826	0849	-	-	0919	0921	0951	
Carlisle	a	0712	0758b	0836	0859	-	-	0929	0934	1001	

						SO	SX			
Newcastle	d	0857	0923	0946	0957	1023	1031	1046	1057	1123
Dunston		0903	▼	▼	1003	▼	▼	▼	1103	▼
MetroCentre		0906	0931	0954	1006	1031	1043	1054	1106	1131
Blaydon		0910	▼	▼	1010	▼	▼	▼	1110	▼
Wylam		0917	▼	▼	1017	▼	▼	▼	1117	▼
Prudhoe		0921	0942	1007	1021	1042	1054	1105	1121	1142
Stocksfield		0926	▼	▼	1026	▼	▼	▼	1126	▼
Riding Mill		0930	▼	▼	1030	▼	▼	▼	1130	▼
Corbridge		0934	▼	▼	1034	▼	▼	▼	1134	▼
Hexham		0940	0955	1022	1040	1055	1109	1118	1140	1155
Haydon Bridge		-	▼	1031	-	▼	1118	1129	-	▼
Bardon Mill		-	▼	▼	-	▼	1124	1135	-	▼
Haltwhistle		-	1014	1042	-	1114	1132	1142	-	1214
Brampton		-	▼	1057	-	▼	▼	▼	-	▼
Wetheral		-	▼	1107	-	▼	1155	1205	-	▼
Carlisle	a	-	1044	1116	-	1146	1205	1215	-	1244

Notes All services operate by Northern.

SO Runs Saturdays only.

SX Runs Mondays to Fridays only.

Newcastle - Hexham - Carlisle

Monday to Saturday

						SO	SX			
Newcastle	d	1150	1159	1223	1257	1323	1340	1355	1357	1423
Dunston		▼	1205	▼	1303	▼	1340	1401	1403	▼
MetroCentre		1201	1208	1231	1306	1331	1348	1404	1406	1431
Blaydon		▼	1212	▼	1310	▼	1340	1408	1410	▼
Wylam		▼	1219	▼	1317	▼	1340	1415	1417	▼
Prudhoe		1212	1223	1242	1321	1342	1359	1419	1421	1442
Stocksfield		▼	1228	▼	1326	▼	1340	1424	1426	▼
Riding Mill		▼	1232	▼	1330	▼	1340	1428	1430	▼
Corbridge		▼	1236	▼	1334	▼	1340	1432	1434	▼
Hexham		1232	1242	1255	1340	1355	1412	1438	1440	1455
Haydon Bridge		1241	-	▼	-	▼	1421	-	-	▼
Bardon Mill		▼	-	▼	-	▼	1427	-	-	▼
Haltwhistle		1253	-	1314	-	1414	1435	-	-	1514
Brampton		1308	-	▼	-	▼	1450	-	-	▼
Wetheral		1317	-	▼	-	▼	1459	-	-	▼
Carlisle	a	1327	-	1346	-	1444	1508	-	-	1544

		SX	SO							
Newcastle	d	1433	1440	1456	1523	1540	1556	1623	1640	1703
Dunston		▼	▼	1502	▼	▼	1602	▼	▼	▼
MetroCentre		1441	1448	1505	1531	1548	1605	1631	1648	1713
Blaydon		▼	▼	1509	▼	▼	1609	▼	1652	1717
Wylam		▼	▼	1516	▼	▼	1616	▼	1658	1723
Prudhoe		1452	1459	1520	1542	1559	1620	1642	1703	1728
Stocksfield		▼	▼	1525	▼	▼	1625	▼	1707	1732
Riding Mill		▼	▼	1529	▼	▼	1629	▼	1712	1737
Corbridge		▼	▼	1533	▼	▼	1633	▼	1716	1741
Hexham		1505	1512	1539	1555	1612	1639	1655	1722	1747
Haydon Bridge		1514	1521	-	▼	1621	-	▼	1732	-
Bardon Mill		1520	1527	-	▼	-	-	▼	1738	-
Haltwhistle		1528	1535	-	1614	1632	-	1714	1745	-
Brampton		▼	▼	-	▼	1647	-	▼	-	-
Wetheral		1550	1557	-	▼	1657	-	▼	1807	-
Carlisle	a	1559	1607	-	1643	1707	-	1744	1817	-

Notes

All services operate by Northern.

SO Runs Saturdays only.

SX Runs Mondays to Fridays only.

Newcastle - Hexham - Carlisle

Monday to Saturday

							DRY	SO	SX	SO
Newcastle	d	1723	1756	1808	1823	1855	1923	1955	2023	2033
Dunston		▼	1802	▼	▼	1900	▼	2000	▼	▼
MetroCentre		1731	1805	1817	1831	1904	1931	2004	2031	2041
Blaydon		1735	1810	1822	1835	1908	1935	2008	2035	2045
Wylam		1741	1816	1828	1842	1914	1941	2014	2041	2051
Prudhoe		1746	1821	1833	1846	1919	1946	2019	2046	2056
Stocksfield		1750	1825	-	1850	1923	1950	-	2050	2100
Riding Mill		1755	1830	-	1855	1928	1955	-	2055	2105
Corbridge		1759	1834	-	1859	1932	1959	-	2059	2109
Hexham		1805	1840	-	1905	1938	2005	-	2105	2115
Haydon Bridge		1815	-	-	1915	-	2015	-	2114	2124
Bardon Mill		1821	-	-	1921	-	2021	-	▼	▼
Haltwhistle		1828	-	-	1928	-	2028	-	2126	2136
Brampton		1843	-	-	1943	-	2043	-	▼	2151
Wetheral		1852	-	-	1952	-	2052	-	▼	2200
Carlisle	a	1901	-	-	2002	-	2102	-	2156	2211

		DRY	SO	SX
Newcastle	d	2125	2236	2253
Dunston		▼	2241	2258
MetroCentre		2133	2245	2302
Blaydon		2137	2249	2306
Wylam		2143	2255	2312
Prudhoe		2148	2300	2317
Stocksfield		2152	2304	2321
Riding Mill		2157	2309	2326
Corbridge		2201	2313	2330
Hexham		2207	2319	2336
Haydon Bridge		2217	-	-
Bardon Mill		2223	-	-
Haltwhistle		2230	-	-
Brampton		2245	-	-
Wetheral		2254	-	-
Carlisle	a	2305	-	-

Notes

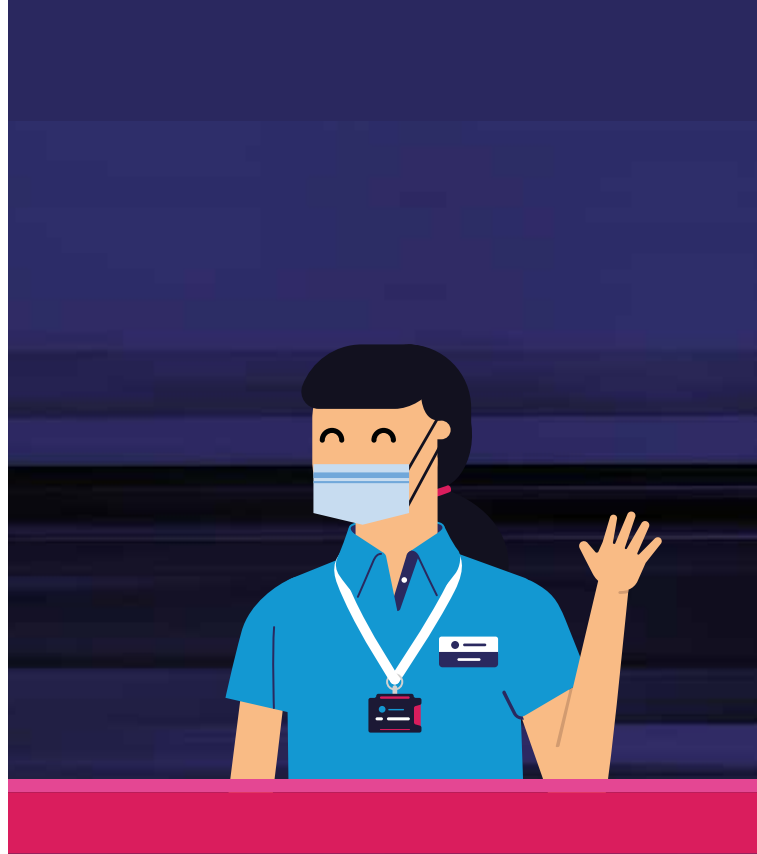
All services operate by Northern.

SO Runs Saturdays only.

SX Runs Mondays to Fridays only.

DRY Dry train. Alcohol in opened and unopened containers not permitted. Travel may also be refused if you are under the influence.

Notes



It's lovely to see you again.

We're keeping things safe, so you can relax and enjoy your journey.

Visit [northernrailway.co.uk](https://www.northernrailway.co.uk)



northernrailway.co.uk



Check times and fares

National Rail Enquiries

03457 48 49 50

Textphone 0345 60 50 60

nationalrail.co.uk



Contact us

0800 200 6060

northernrailway.co.uk/comments

enquiries@northernrailway.co.uk

Customer Experience Centre

Freepost NORTHERN RAILWAY



Access information & assistance

0800 138 5560

Textphone 0800 138 5560

assistance@northernrailway.co.uk



Stay social with us

[@northernassist](https://twitter.com/northernassist)

for help, advice and travel updates

0600 until 2200, 7 days a week